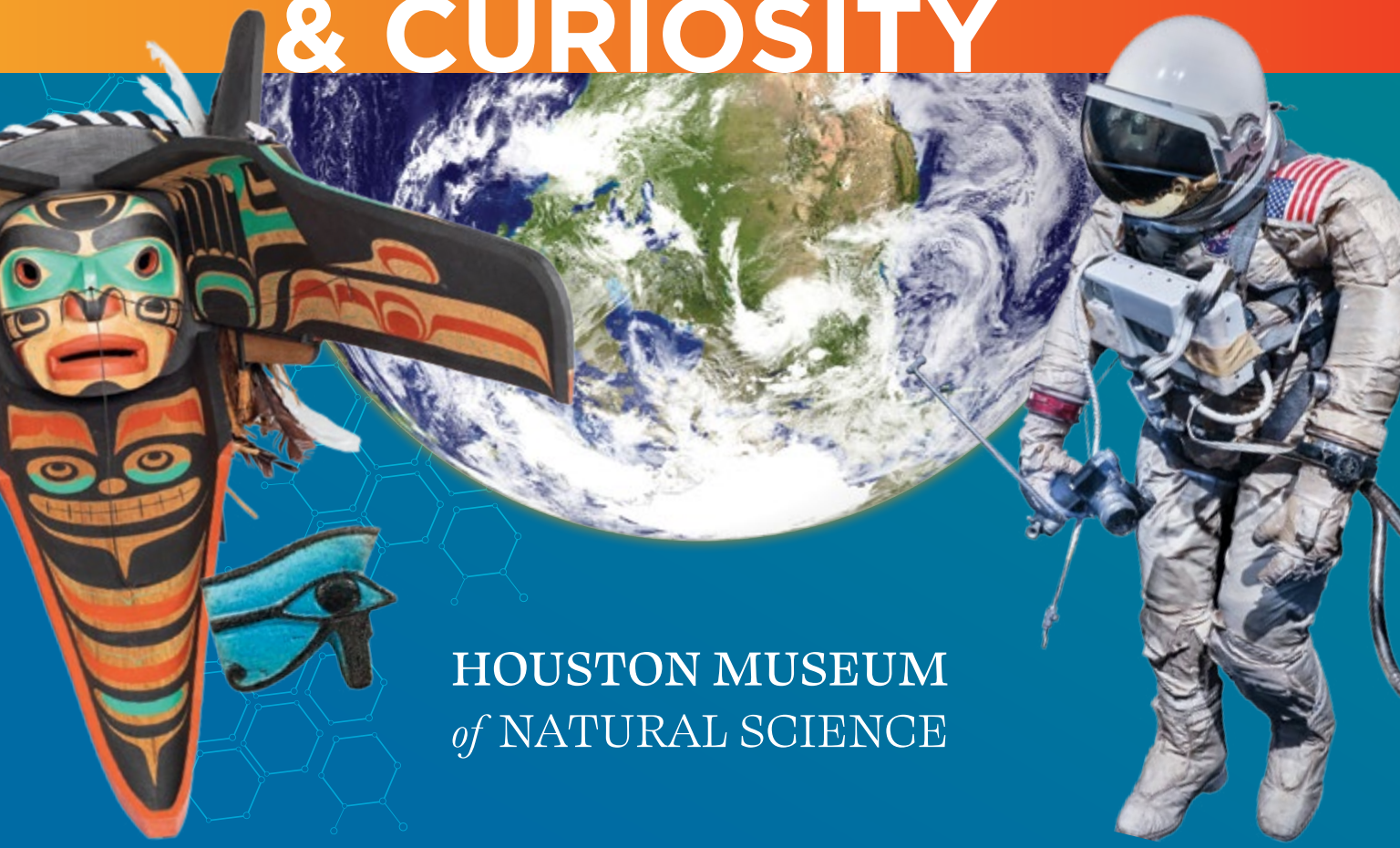


WONDER

& CURIOSITY



HOUSTON MUSEUM
of NATURAL SCIENCE

PRICING



CONTACT US

- Museum** | 713-639-4629 | educationquestions@hmns.org
- Field Trips** | 713-639-4659 | reservations@hmns.org | hmns.org/book
- Accessibility** | 713-639-4620 | accessprogramming@hmns.org
- Curriculum** | 713-639-4659 | educationquestions@hmns.org
- Expedition Center** | 713-639-4727 | reservations@hmns.org
- HMNS @ Sugar Land** | 281-313-2277 x2105 | sugarlandprograms@hmns.org
- George Observatory** | 281-313-2277 x2105 | observatory@hmns.org
- Outreach Programs** | 713-639-4659 | reservations@hmns.org | hmns.org/bookoutreach
- Student Labs** | 713-639-4659 | reservations@hmns.org | hmns.org/booklab
- Student Overnights** | 713-639-4733 | overnights@hmns.org
- Scouts @ HMNS** | 713-639-4631 | scouts@hmns.org
- Girls Exploring Math and Science (GEMS)** | 713-639-4631 | gems@hmns.org
- Summer Camps @ HMNS** | 713-639-4651 | summercamp@hmns.org
- Shell Educators' Preview** | 713-639-4659 | educationquestions@hmns.org
- Gifted and Talented** | 713-639-4659 | giftedandtalented@hmns.org
- Educator Workshops** | 713-639-4659 | educationquestions@hmns.org

Field Trips | p. 4-5

- **Exhibit Halls** | \$4.00
- Burke Baker Planetarium** | \$3.50
- Cockrell Butterfly Center** | \$5.00
- CBC Flight School** | \$250 up to 20 students
- *Wortham Giant Screen Theatre** | \$6.00
- Special Exhibitions** | Call for Pricing

Tours | p. 15

- *Docent Tour** | \$20.00 per 10 people

Early Investigations Program | p. 15

- **Exhibit Hall Program** | \$9.50
- *Cockrell Butterfly Center Program** | \$10.50

Expedition Center | p. 11

- Mini-Crew Mission** | \$230 | 12–25 students | 1 hour
- Junior-Crew Mission** | \$255 | 12–25 students | 1.5 hours
- Full-Crew Mission** | \$350 | 20–45 students | 2 hours

Science Labs | p. 16

- Weekday Labs** | \$225 per lab | 1 hour
- Weekday Science Dissection Labs** | \$275 per lab | 1 hour
- Labs on Demand** | \$275 | 1 hour
- Advanced Labs on Demand** | \$550–\$600 | 2 hours
- Travel Fee \$80 for off-site labs**

Educator Workshops | p. 18

- Gifted and Talented**
- \$55 Member | \$65 Non-Member
- Teacher Workshops**
- FREE Members | \$10 Non-Members
- Educator Late Night**
- \$60 Member | \$75 Non-Member

HMNS @ Sugar Land | p. 12

- Exhibit Halls** | \$3.50
- Dig Pit** | \$5.00
- Nature Program** | \$5.00
- Weekday Labs** | \$225 per lab | 1 hour
- Weekday Science Dissection Labs** | \$275 per lab | 1 hour
- Labs on Demand** | \$275 | 1 hour
- Advanced Labs on Demand** | \$500 – \$600 | 2 hours
- Special Exhibitions** | Call for pricing

George Observatory | p. 13

- *Astronomy Day Class** | \$165 | 1 hour
- *Expedition Center Missions**
- Mini-Crew Mission** | \$230 | 8–18 students | 1 hour
- Junior-Crew Mission** | \$230 | 8–12 students | 1 hour
- Full-Crew Mission** | \$350 | 18–36 students | 2 hours
- *Discovery Dome** | \$3.00 per person | 12–14 students
- Research Dome Tour** | \$4.00 per person | 30 minutes

Outreach Programs | p. 14

- Bugs on Wheels**
- \$425 Half day | \$525 Full day
- Discovery Dome**
- \$425 Half day | \$525 Full day | \$625 Extended day
- Docents to Go** | \$150
- Earth Science on Wheels**
- \$425 Half day | \$525 Full day | \$625 Extended day
- Science on Stage**
- \$425 First two presentations
- \$150 per additional presentation of same topic
- Wildlife on Wheels**
- \$425 Half day | \$525 Full day
- Science Start**
- \$425 Half day | \$525 Full day | \$625 Extended day
- Science Nights** | Call for Pricing
- Museum Careers** | \$150

- *Subject to availability.**
- **Temporary Hall Closures**
- Virtual programming options and pricing available online.**



HMNS FIELDTRIPS



Field Trips

The Houston Museum of Natural Science works hard to help teachers bring learning to life. Booking a Field Trip is the first step in creating lifelong learners.

Reservations

Field Trip reservation requests may be made by completing the online form at hmns.org/book

To receive the discounted Field Trip rate:

- Belong to an educational organization; grades Pre-K-12
- Visit us Monday–Saturday, 9 a.m.–5 p.m.
- Have a minimum of 10 students.
- Chaperones must be at least 21 years of age.
- Make reservations in advance.
- Any group receiving the field trip rate, regardless of age or grade of the students, is required to have 1 chaperone for every 10 students.

For more detailed Field Trip policies, please visit us at hmns.org/fieldtrips.

Payments

Every Field Trip must pay for a minimum of 10 students. Payment is due upon arrival to the Museum. Field Trip rates are already discounted; no additional coupons or membership discounts apply at any of the HMNS locations. To view specific pricing information, see our pricing on page 3 or visit hmns.org/fieldtrips.

Museum Etiquette

To ensure that all Museum visitors have an optimal experience and out of respect for our collections and the safety of others, we ask that all HMNS patrons adhere to the following guidelines:

- Follow all of HMNS current Health and Safety Procedures for Field Trips.
- Keep your hands and feet to yourself.
- Keep a safe distance from objects, walls, cases,

artifacts, and photographs. The oils, salts, and acids in our sweat can damage works of art and artifacts. (Touching of exhibits is only permitted in the Morian Cabinet of Curiosities.)

- Be respectful of Museum Staff, other school groups, and visitors to the Museum – this includes but not limited to:
 - Being considerate when speaking to Museum Staff.
 - Using a quiet voice when walking through the halls.
 - Not using profanity or derogatory language.
- Cell phones must be silenced while in the halls and theatres.
- Food, drinks, and chewing gum are not allowed in the halls.
- Students are not permitted to run or jump in the halls.
- When visiting the Morian Overlook, please do not allow students to drop objects over the balcony into the Morian Hall of Paleontology.
- Please refrain from blocking exit and/or entryways throughout the Museum.
- While viewing exhibits, please allow space for other patrons to safely pass.
- Field trips that are unable to adhere to the Museum Field Trip etiquette and requirements may be asked to leave and/or may not longer qualify for the field trip rate for future visits.

Teachers and chaperones are responsible for the behavior of their students/children during their visit to the Museum. We thank you in advance for ensuring that our Museum remains in good condition for all visitors to enjoy.

If these guidelines are not followed, you may be asked to leave the Museum without a refund.

Field Trip Curriculum

Our team of educators has produced Field Trip curriculum, for grades K-12. Based on each grade's interdisciplinary TEKS objectives, this curriculum covers the Museum's Permanent Exhibit Halls and special exhibitions. All curricula are available online for free at hmns.org/curriculum.

Aramco iExplore: Biodiversity Curriculum

The Aramco iExplore: Biodiversity curriculum is available on-line at hmns.org/curriculum. The curriculum empowers student groups to take a self-guided tour of the Museum while incorporating many of the program's interactive and educational benefits.

Accessibility

The HMNS staff is dedicated to ensuring that all our visitors have the best day possible! If any students or adults in your group have a disability, please inform us when booking your Field Trip so that we can make any requested accommodations to the best of our ability.

We are excited to offer resources for those with sensory sensitivities and those affected by autism spectrum disorders. Before coming to the Museum, download and review our Sensory Guides, Access HMNS app, Exploration Planner, and other resources available at hmns.org/accessibility.

For more information or to find out which exhibits might work best for you and your group, please visit hmns.org/accessibility, call our Museum Services Desk at 713-639-4601, or email accessprogramming@hmns.org.

Sensory Friendly Events

Supported by The Joan and Stanford Alexander Family Fund

HMNS hosts **Sensory Friendly Events** throughout the year at both our Hermann Park and Sugar Land locations. The exhibit halls and shows will have adjusted lighting and volume for all to enjoy.

Events at our Hermann Park location will take place in September and April from 8:00 am - 10:00 am. Events at our Sugar Land location will take place in October, January, and May from 9:00 am - 10:00 am.

As additional support for your students, HMNS also offers an all-day event at our Hermann Park location, **Sensory Friendly Day for Schools**, that will be held in, December from 9:00 am – 5:00 pm. This is a perfect day to book a field trip to the museum for those who have sensory sensitivities.



PERMANENT EXHIBITIONS

PERMANENT EXHIBITIONS

The Houston Museum of Natural Science's Permanent Exhibit Halls offer a unique assortment of interdisciplinary adventures for students of all ages. For more information about our newest Special Exhibitions, visit at hmns.org/special-exhibitions.



Morian Hall of Paleontology



Vintage Texas Wildlife Dioramas



Farish Hall of Texas Wildlife



Morian Cabinet of Curiosities



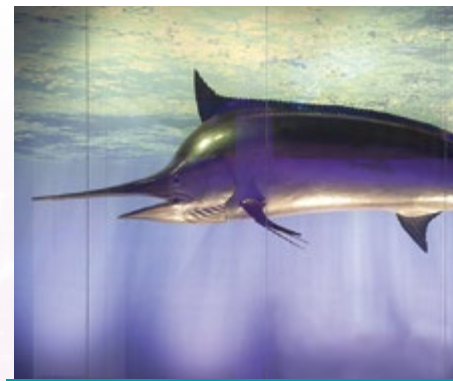
Frensey/Graham Hall of African Wildlife



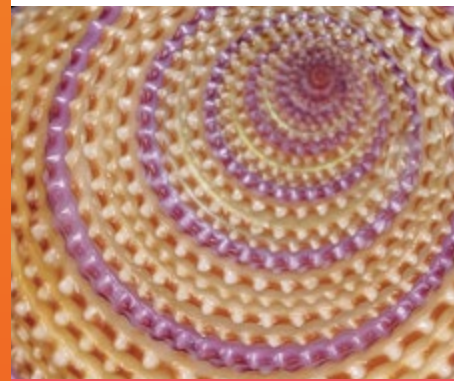
Cullen Hall of Gems and Minerals



The Albert and Ethel Herzstein Foucault Pendulum



Alfred C. Glassell, Jr. Hall



George W. Strake Hall of Malacology



Wiess Energy Hall



Welch Hall: Matter & Motion
Presented by the Ting Tsung and Wei Fong Chao Foundation



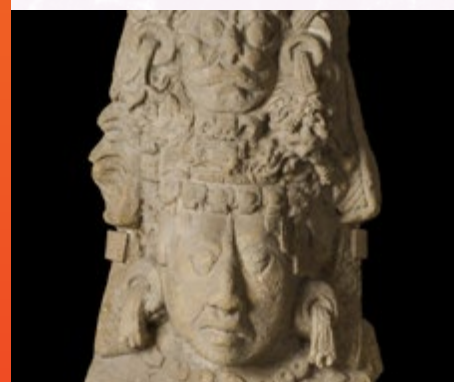
The Lester and Sue Smith Gem Vault



Hamman Hall of Texas Coastal Ecology



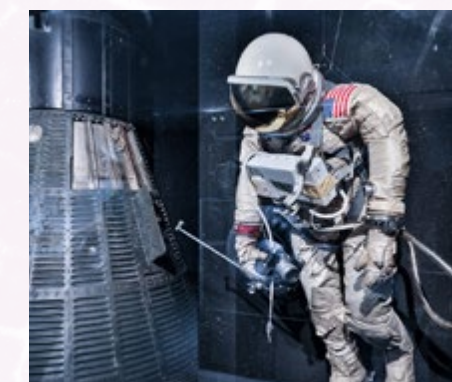
Lower Education Wing



John P. McGovern Hall of The Americas



Hall of Ancient Egypt



Arnold Space Hall

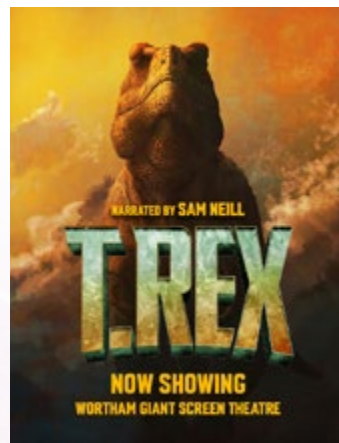
WORTHAM

GIANT SCREEN THEATRE

Films That Inspire Lifelong Learning

The **Wortham Giant Screen Theatre** features the latest in state-of-the-art motion picture projection. In stunning 4K digital with advanced technology, students can immerse themselves in the depths of the ocean, the heat of volcanoes, or fly across the rainforest canopy, all projected onto a giant screen.

Watch our film trailers and find a full list of our featured films online at [hmns.org/giantscreen!](http://hmns.org/giantscreen)



Teacher's Choice

Teacher's Choice allows educators to change the film playing during the first three time slots of the day. Reservations must be made at least five business days in advance and are on a first-come, first-served basis. Films are available in 2D and 3D. Most films have closed captioning and online education resources available.



hmns.org/giantscreen

COCKRELL

BUTTERFLY CENTER

Visit the **Cockrell Butterfly Center**—where students experience the amazing world of arthropods in a tropical rainforest!

Your visit begins in the **Brown Hall of Entomology** for an in-depth look at arthropods. There you will marvel at astounding live insects, spectacular mounted specimens, larger-than-life models, and interactive games. Afterwards, enter a stunning three-story glass structure filled with hundreds of living butterflies, exotic plants, and even some tropical birds and reptiles.

Enhance your experience by including an Early Investigations, Lab on Demand, or On-site Outreach Program.

***In-person programming subject availability**

CBC Flight School

Soar into first class with Flight School! Led by a team of expert butterfly flight attendants, you'll learn what it takes to become an ace butterfly pilot, and release a butterfly of your very own into the Center's rainforest. Releases are limited, reserve your group's flight today!

Contact reservations@hmns.org to book a flight for your group!



hmns.org/butterflycenter

BURKE BAKER PLANETARIUM

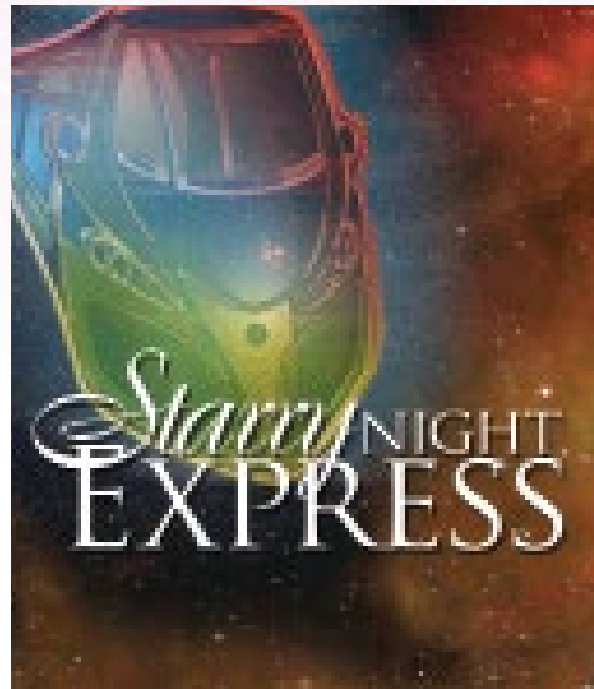
Pick your destination and leave the Earth behind! Choose from a live interactive TEKS-based show or select a film to suit your grade and topic from our incredible collection of dynamic planetarium shows in the **Friedkin Theatre** underneath the **Radoff Dome**.

Planetarium Picks for Educators

Now the whole Universe is yours - just book 25 or more students, and then you can choose your showing and viewing time. Shows are available every half hour from 10:30 a.m. to 3:30 p.m. on weekdays.

Reserve early as seating is limited.

You can view which shows are currently available online at hmns.org/planetarium-picks.



hmns.org/planetarium



EXPEDITION CENTER

The Expedition Center is a unique team problem-solving simulator. During missions, teams receive tasks and students must work together to reach their destination on the red planet, Mars. Meanwhile Mission Controllers monitor their progress and help when needed, especially in emergencies. It's a dramatic, high energy, completely interactive group experience where the students are in charge. When they succeed in reaching their destination, it is met with pride and applause!

Houston provides career opportunities in medicine, technology, engineering, and space, as well as the biological and geological sciences. During each Expedition, students model these real world careers as they explore the surface of Mars. Our Expeditions also emphasize the skills that make good students and valuable employees: responsibility, teamwork, decision-making, and communication. All Expeditions include free admission to the Museum's Permanent Exhibit Halls—excluding special exhibitions.

Expedition Center Programs

MISSION SPACE

It is the year 2076; this mission must be successful, and only your students can make it happen. New Tranquility Base on the Moon is awaiting the arrival of your space ship from Earth for a crew exchange before journeying to Mars. Students must work together to complete a successful Expedition while performing experiments, maintaining the ship, and surviving the perils of space travel.

MISSION DEEP DIVE

Students in a submarine and on a surface ship chart the path of the iceberg that sank the legendary RMS Titanic. Their mission ends with an exploration of the wreck site for new clues about what sank the unsinkable ship. In the second deep-sea challenge, students in the ship and submarine head for a deep water coral reef in the Azores. There, a treasure laden galleon sank over 400 years ago and has never been found. The treasure still lies somewhere on the ocean floor.

These Expeditions are available for students of most age groups. You can schedule an Expedition for your students Monday–Saturday, 9 a.m.–3 p.m.

Mini-Crew Expedition | 1 hour

12–25 students; Grades 4–12

Junior-Crew Expedition | 1.5 hours

12–25 students;
Kindergarten–Grade 3

Full-Crew Expedition | 2 hours

24–44 students; Grades 4–12

***Program is subject to availability and some grades require a minimum amount of adults per student during the mission.**

Staff Development/Team Building

For an exceptional staff development or team building activity, book an Expedition for your teaching staff.

Contact aed@hmns.org.



hmns.org/space

HMNS AT SUGAR LAND

GEORGE OBSERVATORY

Located in a historic building in Sugar Land, our satellite campus is the perfect venue for a Field Trip.

Field Trips

The museum is home to a full-size Science on a Sphere and an outdoor pollinator garden. The Permanent Exhibit Halls, featuring items from the HMNS collection, cover Life Science, Geology, Energy, Chemistry, Space and Physical Sciences, along with Paleontology. Seasonal special exhibitions are also scheduled throughout the year. Information about these programs and more may be found at hmns.org/sugarland.

Enhanced Experience

Customize your Field Trip by requesting an Enhanced Experience. Students can also search the native Texas plants in the pollinator garden for caterpillars or chrysalises, schedule a special hands-on experience in the dig pit, explore a virtual descent into a salt mine or learn some "life lessons" by scheduling an interactive Nature Program.

Science Labs

Labs Classes are unique additions to enhance your Field Trips at HMNS at Sugar Land. Students can learn topics from history to landforms and even take part in a lab dissection.

Visit hmns.org/sugarlandlabs for additional information.

A two-week notice is required to schedule all lab classes.

To book a field trip to our Sugar Land location, fill out your booking form online at hmns.org/book.



George Observatory

Located in beautiful Brazos Bend State Park, the George Observatory offers a wide array of activities such as the Expedition Center Program, Astronomy classes, and more! Be sure to keep track of what's happening at hmns.org/observatory.

Expedition Center Programs at the George Observatory

The George Observatory's Expedition Center is a simulation of Mission Control and a Space Station, where students learn how to work together to complete their mission to the Moon and/or Mars. Their goal is to establish a base, by searching both planets to find building materials, and to create permanent working and living quarters.

The astronauts will also have to find some way to sustain themselves by growing plants, recycling water and creating oxygen. Participants transform into scientists, doctors and engineers, and work together to analyze, problem solve, and communicate to make their mission a success.

Mini-Crew Expedition | 1 hour
8-18 students

Junior-Crew Expedition | 1 hour
8-12 students

Full-Crew Expedition | 2 hours
18-36 students

Discovery Dome

Our inflatable dome theater is an exciting experience that offers stars, planets, dinosaurs, volcanoes, tornadoes, DNA, and much more! Each full-dome film or live presentation lasts up to 30 minutes, and you may choose several presentations in the same visit or combine a show with an astronomy class, or an Expedition Center Mission.

Astronomy Classes

One-hour daytime astronomy classes include a tour of the George Observatory research telescope dome. Astronomy classes may be combined with an Expedition Center mission or a Discovery Dome show.

For additional information about our Astronomy Classes, please visit hmns.org/observatory.

The George Experience

This is the perfect Field Trip Package for getting your students outdoors and interacting with the environment while gaining knowledge in the areas of astronomy and problem solving! Students can rotate between an Expedition Center mission, astronomy class, Discovery Dome show, or a self-guided scavenger hunt through Creekfield Trail.

Private Group Stargazing

This interactive program includes stargazing on deck as well as access to the exhibit area. Groups of 30-100 will meet prior to sunset and enjoy a 2-hour customizable experience. The stargazing program takes place on Tue-Fri nights only.

To book a field trip to the George Observatory, fill out your booking form online at hmns.org/book.

***George Observatory in-person programming subject to availability.**

***Open Saturday Nights to the public with advanced ticket purchase.**

***Weather Permitting**



hmns.org/george-observatory

hmns.org/sugarland

OUTREACH PROGRAMS



Bring the wonder of HMNS to you, with our exciting Outreach Programs! These programs will engage your students, covering a wide variety of topics from paleontology to astronomy with both in-person and virtual options available this school year. Whether you teach kindergarten or high school, we can adapt our programs to fit your students and their learning needs. Most programs include TEKS-aligned curriculum and all are tailored to grade-specific TEKS objectives. Fill out a booking form online at hmns.org/bookoutreach to reserve a program.

Bugs on Wheels

Fascinating, hands-on presentations will introduce students to the wonderful world of plants, insects, and other arthropods, with live specimens.

Wildlife on Wheels

Students can enjoy a live animal presentation while exploring the basics of animal life.

Discovery Dome

A portable dome theatre brings stars, planets, dinosaurs, volcanoes, and more to your school, offering over 40 full-dome immersive films and live presentations for grades PreK-12! Download a brochure with show descriptions and suggested grade levels at hmns.org/discoverydome.

Earth Science on Wheels

From crystals to claws, and teeth to Triceratops skin, your students will be amazed by the wonders of Earth Science.

Science on Stage

These large-group presentations explore physical science through exciting demonstrations, from discovering the effects of liquid nitrogen to seeing Newton's Laws in action. Suitable for grades 2-12.

Science Start

Hands-on, real-world activities focusing on inquiry and experimentation introduce students to fundamental objectives in an easy-to-grasp way, tailored to grades K-2.

Docents to Go

A trained Museum docent will visit your school or organization with real Museum artifacts and specimens!

Choose from the following formats for your outreach program depending on your needs this year!

IN-PERSON

All topics are available for in-person programs though they are subject to presenter availability. Book early to secure your date!

PRE-RECORDED VIRTUAL

Select topics are available as pre-recorded presentations. You'll have 14 days of access from purchase to the presentation to share with your students, so you can watch it anytime. Have questions? Book a live Q & A session with one of our educators or curators as an add-on to your pre-recorded presentation!

LIVE, VIRTUAL Q & A WITH EDUCATOR OR DOCENT

For an additional fee you can add a live Q & A session with an educator or docent. Live Q & A reservations may be made by emailing reservations@hmns.org.



DOCENT TOURS & EARLY INVESTIGATIONS

GUIDED TOUR OPTIONS

Docent Tours

To enhance your Field Trip, for an additional fee, school groups can get an exciting, interactive look at our Exhibit Halls by booking a docent tour! Enjoy a tour with specially trained docents who may allow students to access touch carts and provide further knowledge regarding the Museum's collections. Tours are available for each of the Permanent Exhibit Halls and last approximately 45 minutes. Docent Tours require one guide per every 10 people and a minimum of 3 weeks notice.

Early Investigations (Grades K-3)

Perfect for younger students ages 4 to 8 years old. During this 1 ½ hour long program, students will handle real artifacts and specimens, take a tour in one of our Permanent Exhibit Halls or Butterfly Center, and participate in educational activities!

In-person programming is subject to availability.

For detailed class descriptions and capacity, visit hmns.org/earlyinvestigations.



SCIENCE LABS

Weekday Labs

Our labs allow students to examine ancient objects, investigate technology, meet live animals, or conduct scientific experiments depending on the lab booking. Each lab lasts one hour and includes admission to the Museum's Permanent Exhibit Halls for lab participants on the day of your lab. Labs can accommodate up to 25 students and are held monthly at HMNS and select Thursdays and Fridays at HMNS at Sugar Land.

Themes include Time, Wildlife, Earth Science, Biology, ConocoPhillips TechnoScience, and Dissection.

Labs on Demand

With over 100 labs to choose from, Labs on Demand allow you to delve deeper into challenging topics while matching your scope and sequence. Both our standard one-hour labs and our advanced two-hour labs can accommodate up to 25 students per session. Lab fees include admission to the Museum's Permanent Exhibit Halls for lab participants on the day of your lab. A docent tour can be paired with your lab at an additional cost.

Topics include, but are not limited to, Chemistry, Force and Motion, Ancient Egypt, Cells, Paleontology, Organ and whole organism dissections. For more information, visit our website at hmns.org/labs.

Virtual Labs on Demand

Virtual labs provide an hour of educational engagement and hands-on activities for students at home or in the classroom. Choose between pre-recorded or live virtual presentations, depending on your program's and audience's needs, we've got the options you need for any topic or audience.

Virtual pre-recorded labs will provide around a half hour of instruction with an HMNS Educator to teach students about a specific topic. The lab includes an activity for the class to follow along with! Supply lists will be included upon purchase as well as include worksheets and basic classroom supplies.

Virtual Pre-recorded lab link: (COMING SOON!)

***Virtual Dissection Labs will be dissection demonstrations with the opportunity to engage with the instructor and ask questions.**

All lab pricing can be found on page 3.



hmns.org/labs

OTHER UNIQUE STUDENT AND FAMILY PROGRAMS

Scouts @ HMNS

Supported by Oxy

The Museum offers classes and activities at two locations and online to assist Scouts BSA, Cub Scouts, and Girl Scouts of all ages in earning an array of Badges, Adventures, and patches. Classes are offered virtually and in-person throughout the school year. One-day classes the week of Spring Break and week-long programs are offered over the summer. Ask about Badges on Demand at scouts@hmns.org.

For the latest scout schedule, visit us at hmns.org/scouts

STEM DAY

Join us for this annual event on October 4 from 9:00 a.m. –1:00 p.m. STEM Day Community Booths will provide interactive activities and giveaways. With admission to the museum, Scouts will also have the opportunity to complete activities created by HMNS STEM Scouting staff. Visit hmns.org/stemday for more info. Register early—space is limited.

GEMS DAY

Presented by CITGO Petroleum Corporation

This annual event will occur on November 8 from 9:00 a.m. –1:00 p.m. GEMS (Girls Exploring Math and Science) Community Booths will provide interactive activities and giveaways. With admission to the museum, Girl Scouts will also have an opportunity to visit booths run by local troops and schools, competing for Scholarship Award! For more information on GEMS Day, Student STEM Ambassador Booths or GEMS Overnight, please visit our website at hmns.org/gems.

Overnight & Late Night Field Trips for Students

Enjoy a Late Night at HMNS with your students! Complete a Permanent Exhibit Hall scavenger hunt, explore hands-on activities, and see a Burke Baker Planetarium show after the museum closes.

Stay a little later by spending the night at HMNS! After a fun-filled evening of hands-on activities, students will settle down to sleep in one of our halls. Customize your Overnight to include a science lab or on-site Outreach Program to create your own unforgettable Overnight adventure!

For more information about student Late Nights or Overnights, visit our website at hmns.org/overnights.

Teen School Year Volunteer Opportunities

Have an organized group of 10 or more students? HMNS offers occasional opportunities to volunteer together on a single day. Visit hmns.org/teens for details and to request a date.

Summer Camps @ HMNS

Summer Camps offer fun experiences for children ages 6–12. These camps will provide educational engagement for your child—from dinosaurs to robotics and space to science magic, every young thinker will be challenged!

For a full list of camp offerings, visit our website at hmns.org/summercamp.

2026 Summer Camps go on sale to members late November 2025 and general public March 2, 2026.

Birthday Parties

The Party Smarty birthday party program at HMNS and HMNS Sugar Land is your one-stop-shop for party planning — from selecting a theme to unique museum activities, we've got you covered. We're more than cake and candles - we make it our mission for your child to have an unforgettable time and to learn something while they're at it! To book your child's next birthday with us, fill out our online booking form at hmns.org/bookbirthday.

***Additional fees may apply for some programs.**

Office Hours

Have a burning question? Need help with a particular subject area? Just want to talk shop with a museum educator? HMNS offers Office Hours with our educators and docents.

Available upon request. To schedule Office Hours, email reservations@hmns.org and submit a request and the reservations staff will contact you shortly to confirm your request.



hmns.org/education

EDUCATOR RESOURCES & PROFESSIONAL DEVELOPMENT

Gifted and Talented Staff Development

Differentiation with the Museum

Participants will participate in hands-on, interactive activities available for immediate implementation. At the end of the session, educators will earn 6 hours of credit toward the completion of the state-mandated 30 hours of G/T teacher training OR a 6-hour update credit for those who have completed their 30 hours.

Registration for the 2026 workshop will open online in early spring 2026. For more information, visit hmns.org/GT.

Virtual Teacher Workshops

From the comfort of your own home, earn two hours of CPE credit in this school year's monthly virtual teacher workshops! These subject-based workshops will be taught by HMNS Educators over Zoom.

View our class dates in the monthly calendar or online! Register today at hmns.org/workshops.

Educator Late Night

During Educator Late Nights you will enjoy the Houston Museum of Natural Science after hours as you participate in an exclusive Late Night experience designed specifically for Educators. In each fun-filled evening, you will work on hands-on activities to use in your classroom, have a catered dinner, and tour exhibits. 6 hours of CPE credit will be awarded to participants at the end of the event. Registration for the Educator Late Nights is restricted to Educators Only.

Visit hmns.org/workshops for more information.

Shell Educators' Preview

Free for Educators

Join us twice a year as we showcase our newest exhibition and earn 1 hour of CPE credit during a VIP evening just for educators!

Excellence in Science Teaching Awards and Student Scholarships

Each year teachers and students in the Houston area are recognized for their exemplary work in the fields of math and science. Annual awards of \$3,000, made possible by The Cockrell Foundation, are given to two teachers and two students and given recognition at HMNS.

Visit hmns.org/awards for more information.

Educator Membership

Enjoy all the perks of an HMNS membership along with educator-specific benefits and discounts, including access to virtual content for both you and your students! Your membership supports all of the museum's educational programming.

- Registered for Educator Members e-blast which will include discounts and special opportunities
- Access to FREE Virtual Teacher Workshops for CPE credit throughout the school year and discounts on other teacher workshops and professional development
- Discounts on most in-person Outreach programs and Labs on Demand as well as a Late Night for your school or student group

To become an Educator Member email educationquestions@hmns.org and for more information, visit us at hmns.org/membership.

Adult Education Programs

Join select Adult Education programs to earn extra continuing professional education (CPE) credit. These programs take place throughout the year.

Visit hmns.org/adults for more information.

THANK YOU TO ALL OF OUR PARTNERS IN SCIENCE!

The Houston Museum of Natural Science is exceptionally grateful to the following 2025–2026 Partners in Science, whose annual contributions advance our mission to provide world-class exhibitions and science education programming to the Houston community and beyond.

Apache Corporation

Buc-ee's®

Chevron

Kinder Morgan

Shell USA, Inc.

Aramco

CenterPoint Energy

ConocoPhillips

Oxy

Westlake Corporation

CITGO Petroleum Corporation

ExxonMobil

Frost Bank

Magnolia Oil & Gas Corporation

Phillips 66

Woodforest National Bank

AIG

The Friedkin Group

Transocean

bp America

Houston Safe & Lock

Woodside Energy

Bank of America
NOV

H-E-B
Union Pacific Foundation

Mitsubishi Corporation (Americas)

Amegy Bank

Morgan Stanley



hmns.org/education



NON-PROFIT ORG.
U.S. POSTAGE
PAID
PERMIT NO. 6371
HOUSTON, TX

HOUSTON MUSEUM *of* NATURAL SCIENCE

Houston Museum of Natural Science

5555 Hermann Park Drive
Houston, Texas 77030

**Houston Museum of Natural Science
at Sugar Land**

13016 University Blvd
Sugar Land, Texas 77479

George Observatory

21901 FM 762
Needville, Texas 77461

OUR MISSION

The mission of the Houston Museum of Natural Science shall be to preserve and advance the general knowledge of natural science; to enhance in individuals the knowledge of and delight in natural science and related subjects; and to maintain and promote a museum of the first class.

