

[www.hmns.org](http://www.hmns.org)

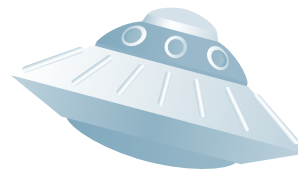
*the Houston  
Museum of  
natural science*

# Xplorations

**SUMMER 2015**

Science Adventures for kids ages 6-12

Also in Sugar Land at  
the Houston Museum of  
Natural Science Sugar Land!



# CONTENTS

<b>Registration Information</b>	<b>3</b>
<b>Cancellation/Refund Policy</b>	<b>3 - 4</b>
<b>Required Camper Health Record Form</b>	<b>4</b>
<b>Camps for ages 6-7 (entering grades 1-2)</b>	<b>4 - 5</b>
<b>Camps for ages 8-9 (entering grades 3-4)</b>	<b>5 - 7</b>
<b>Camps for ages 10-12 (entering grades 5-7)</b>	<b>7 - 8</b>
<b>Locations</b>	<b>8</b>
<b>Before and After Camps (extended care)</b>	<b>8</b>
<b>Frequently Asked Questions</b>	<b>8 - 9</b>
<b>Camp Schedule</b>	<b>10 - 17</b>
<b>Camper Health Record Form (for fax or mail)</b>	<b>18</b>
<b>Registration Form (for fax or mail)</b>	<b>19</b>
<b>Parking Information</b>	<b>20</b>
<b>2014 - 2015 HMNS Partners in Education</b>	<b>21</b>

# REGISTRATION

You may register for Xplorations Summer Science Adventures by fax, mail or online. Online registration is preferred and provides instant confirmation. We are unable to accept registrations over the telephone.

HMNS membership must be current at FAMILY LEVEL OR ABOVE to take advantage of early registration dates. Please upgrade or renew your Membership at least **two weeks prior** to your registration date. You may do this by clicking on MEMBERSHIP on our website [www.hmns.org](http://www.hmns.org).

**Priority membership registration begins:**

**Thursday, February 19:** Benefactor and Discoverer  
**Monday, February 23:** Voyager  
**Monday, March 2:** Family  
**Monday, March 23:** General Public

**PLEASE NOTE:** Online registration begins at 12:01 am on the date indicated; faxed and mailed registrations will be processed starting at 9 a.m. on the date indicated.

## ONLINE REGISTRATION

By registering online, you will receive instant confirmation regarding your Summer Xplorations choices. In order to register online, you will need to have an HMNS User Account. You do not need to be a member in order to set up an account. You must have a valid email account in order to receive your password to log into the system.

If you already have a HMNS User Account, but forgot your password or username, call 713-639-4625 Monday-Friday 9:00 a.m. – 4:00 p.m. or email: [xplorations@hmns.org](mailto:xplorations@hmns.org).

**Before you start, make sure you have your HMNS Membership number (if applicable) and a valid credit card.**

- Go to [www.hmns.org](http://www.hmns.org) and click on TICKETS.
- In order to complete your purchase you will need to click on the SIGN IN link in the top right hand corner of the page.
- If you are a returning customer, enter your User Name and Password.
- If you don't have an account with us and are a HMNS member, please click on REGISTER HERE AS A NEW USER under the NEW CUSTOMERS-MEMBERS heading.
- If you don't have an account with us and **are not** a HMNS member, please click on REGISTER AS A NEW USER under the NEW CUSTOMERS heading.
- Click on SAVE and CONTINUE to submit your information to be logged into the HMNS eBoxOffice.

**Now you are ready to register for camps.**

- Select HMNS SUMMER CAMPS or SUGAR LAND SUMMER CAMPS from the list on the left.
- Select camps by title with appropriate age group to see a description of the camp.
- Select the desired camp date for the camp you have chosen. The date the camp is offered will always be a Monday and

the available dates for the camp will be displayed in the DATE SELECTION BOX.

- If the camp date you selected is available, the QUANTITY SELECTION box will appear.
- Select the quantity you would like to purchase and click CONTINUE.
- Click CONTINUE ORDERING until all desired camps, including Before Camp and After Camp are in your order. Once all selections are made, click FINISH ORDER to proceed to checkout.
- Review your order and click CONTINUE to purchase.
- Enter your child's name and click CONTINUE.
- Enter your credit card information and click CONTINUE.
- Review your order. You must agree to the Terms of Service by checking the I AGREE box to complete the transaction. Then click PROCEED WITH YOUR ORDER.
- When your purchase is complete, you will receive a Transaction Confirmation Number for your order.
- Print out this confirmation page for your records.
- An email confirmation will be sent to you to verify your purchase.

## FAX/MAIL REGISTRATION

- One registration form must be completed for each camper you are registering.
- Registration forms with incomplete or inaccurate information will not be processed.
- If your first choice is unavailable, we will register your second choice. If your second choice is unavailable, we will contact you for more information.
- Forms may be emailed, faxed or mailed.  
**Please do not do more than one!**
- Email as an attachment to [xplorations@hmns.org](mailto:xplorations@hmns.org).
- Fax to 713-639-4681 or mail your registration to:

**Xplorations**  
**Houston Museum of Natural Science**  
**5555 Hermann Circle Drive**  
**Houston TX 77030-1799**

**PLEASE NOTE:** Depending on the number of faxed or mailed registrations we receive, it may take up to five days to process and e-mail a confirmation statement back to you. During this time, camps you selected may have closed due to the real-time nature of online registration. The Museum cannot confirm camps until your registration is processed.

## CANCELLATIONS, EXCHANGES, AND REFUNDS

- Due to the high demand for camp spaces, each sale will be considered final.
- Registrations are not transferable from child to child.
- Patrons who cancel a camp or wish to switch their child from one camp to another will receive a 50% refund of the cost of a cancelled or dropped camp if notification is received at least 10 working days before that camp starts. There are no refunds for camps cancelled or dropped less than 10 working days before camp begins.

- In order to receive the 50% refund, patrons must contact the Education Department in writing. Fax to 713-639-4681 OR email [xplorations@hmns.org](mailto:xplorations@hmns.org) OR mail your request to:

**Xplorations**  
**Houston Museum of Natural Science**  
**5555 Hermann Park Drive**  
**Houston TX 77030-1799**

The Museum reserves the right to cancel camps that do not meet minimum enrollment. If a camp is canceled by the Museum, patrons will receive a full refund.

## INCLEMENT WEATHER POLICY

In the event of inclement weather we will make every effort to make an announcement about camp closure as quickly as possible. Updated information will be available on our camp hotline at 713-639-4652. If camp is closed due to inclement weather there will be no refunds or exchanges.

## QUESTIONS?

Email us at [xplorations@hmns.org](mailto:xplorations@hmns.org) or leave a voice message with the camp registrar at 713-639-4625. View all camp information at [www.hmns.org/summercamps](http://www.hmns.org/summercamps).

# HEALTH FORM

## REQUIRED HEALTH RECORD FORM FOR ALL CAMPERS

- A completed **Xplorations Camper Health Record Form** must be on file with the Xplorations Office prior to each child beginning camp.
- Complete the **Xplorations Camper Health Record Form** at [www.hmns.org](http://www.hmns.org), select *Education* and then select *Summer Camps* to download a copy.
- Completed **Xplorations Camper Health Record Forms** can be faxed to 713-639-4681, emailed as an attachment to: [xplorations@hmns.org](mailto:xplorations@hmns.org), OR mailed or dropped off to:

**Xplorations**  
**Education Office**  
**Houston Museum of Natural Science**  
**5555 Hermann Park Drive**  
**Houston, TX 77030-1799**

- **PLEASE NOTE** – Children will not be allowed to participate in camp activities without a completed **Xplorations Camper Health Record Form** on file prior to the first day of camp.
- **NO REFUNDS** will be processed for activities missed due to a missing or incomplete **Xplorations Camper Health Record Form**.

# CAMP LISTINGS

**PLEASE NOTE** – next to the camp name is a list of the locations where the camp is offered. (HMNS indicates the camp is offered at the main museum location in Hermann Park and **Sugar Land** indicates the camp is offered at HMNS Sugar Land.)

## AGES 6 AND 7

**Camper must be at least 6 years of age or entering grades 1 or 2 by September 1, 2015**

### **Art Smart (HMNS)**

Paint without touching the paper, get creative with cauliflower, and make mysterious pictures that appear like magic. From flat to fluffy, making art is tons of fun! Sometimes you have to get messy to make a masterpiece. Get Art Smart to find out how!

### **Booms and Blast-Offs (HMNS and Sugar Land)**

Experiment with things that go BOOM, from foaming chemicals to popping balloons. Make Bernoulli flying machines (from loopers to helicopter) with paper, water, straws, funnels, balls, and balloons. Create rockets and air planes that are yours to take home.

### **Build It Big (HMNS and Sugar Land)**

Build beyond your imagination! Use surprising things to construct amazing creations. Discover which shapes make the strongest structures. Try your hand at building and have fun demolishing some of your structures as you learn how architects make buildings strong.

### **Calamity Camp (HMNS)**

Welcome to the Weather Lab where you will tame a twister, battle a blizzard, hunt a hurricane and much more as you explore and experiment to discover nature's awe inspiring fury.

### **Creepy Crawlies (HMNS)**

Caterpillars, beetles, bees, and other creepy crawly things are cool! Collect your own specimens, then build miniature habitats to house and observe them. Dissect a grasshopper and build a model anthill. **Camp includes optional bug tasting activity. Class includes dissection.**

### **Junior Paleontologist (HMNS and Sugar Land)**

Meet the king of the dinosaurs up close and personal! Discover how the T. rex at our museum lived and died – and how it was discovered by paleontologists. Find out what features give these incredible lizards their names, go on a mock dig and touch real dinosaur bones!

### Junior Science Magic (HMNS and Sugar Land)

Become a science magician! Discover how physics and chemistry make magic. Experiment with optical illusions and things that glow in the dark. Master cool chemistry tricks; concoct slimy mixtures and potions that change color. Learn how magicians read minds and fool your friends with coin and card tricks. Show off your new tricks in Friday's magic show.

### Kitchen Chemistry (HMNS)

This is science you can really sink your teeth into! Are you ready to cook up some crazy chemical concoctions? Learn what kind of mold actually tastes good, what flowers are safe to eat, and what cool chemical reactions happen as we cook. Explore cuisine from other countries; grow your own food and much more. **This class is not recommended for children with food allergies or food sensitivities. Camp includes optional bug tasting activity.**

### Man's Best Friend (HMNS)

Can an old dog learn a new trick? Why doesn't a Komodo dragon make a good pet? Come explore some of "man's best friends" as you get up close and personal with animals in your classroom. Grow your own catnip, make your own dog treats, make a bird feeder that no wild bird can resist and much more in this hands-on "hare-raising" experience.

### Master Museum Camp (HMNS)

Where can you travel from the rainforest to the sea; discover what sparkling gems and powerful fuels are deep within the earth; see prehistoric giants and the night sky in the middle of the day all without leaving the building? Why at the Houston Museum of Natural Science of course! Come join us in a week long adventure as we explore the museum and engage in crafts and experiments.

### Mummies & Mysteries (HMNS)

Get 'wrapped up' in ancient Egypt. Meet Ankh-hap, our resident mummy. Learn how the ancients made their mummies, explore how the pyramids were built as you create your own miniature model to take home, write your name in hieroglyphics, and create your own magic amulets. Join us for an Egyptian mystery!

### Roving Robots (HMNS and Sugar Land)

Become a robot expert by experimenting with gears, motors, batteries, and wheels. Create a robot of your own design.

### Science of the Round Table (HMNS)

Calling all lords and ladies! Be our knights in shining armor as you journey through the fabulous world of castles, kings and queens! Create your own coat of arms, build your own castle, and learn what it takes to defend it. Build a catapult and lay siege to the enemy. The coat of arms, castle, and catapult are yours to take home after the 'Medieval Faire' on Friday.

### Space Cadet (HMNS)

Get ready to go to Mars and explore science like the astronauts. Learn how to operate robot arms, grow plants in space, and find out why astronauts wear diapers! On Friday use your training to complete a journey to Mars aboard the *SS Legacy* in the Expedition Center.

### Star Warriors Academy (HMNS and Sugar Land)

Is it really possible to control things with the power of your mind? Learn science fact from science fiction when you explore the planets, creatures, androids and vehicles in imaginary galaxies as you learn about the real planets, animals, robots and cool transportation in your own backyard.

### Super Hero Science (HMNS)

From Spiderman™ (venomous arachnids!) to Batman™ (vampire bats!), you'll experience some of the exciting science that super heroes use daily. Discover the science of cold as you explore Mr. Freeze™ and the science behind his amazing powers. How does Aquaman™ breathe underwater? Don't be a Joker™ and miss out on this one! **Camp includes dissection.**

### Waterworks (HMNS and Sugar Land)

From bubbles and fountains to waves and whales, dive into this watery adventure! Create amazing bubble buildings and bubble art. Make a mysterious diver sink at your command, then design your own cargo boat and figure out why it floats.

### Wizard Science Academy (HMNS and Sugar Land)

Step into an amazing world of wizarding as you learn the real science behind the care of wizard pets, herbs, herpetology and the chemistry behind magical potions. Create your own wand, hat and book of science spells in this week of wonders.

## AGES 8 AND 9

**Camper must be at least 8 years of age or entering grades 3 or 4 by September 1, 2015**

### Amazing Animals (HMNS)

Join the safari at the Museum as you discover some of the strangest animals on Earth! From meat-eating predators to the tiniest amebas, your world is full of amazing creatures! Explore the Museum's live animal collection, butterfly center, and exhibit halls as we "hunt" for some of the most amazing animals on earth. **Camp includes dissection.**

### Bedazzled (HMNS)

Be dazzled by the science behind makeup, jewelry, lotions, and more! Learn the chemistry behind beauty products, as you make your own. Discover how ancient Egyptians made and used make-up.

### Build it Big (HMNS)

Build beyond your imagination! Use surprising things to construct amazing creations. Discover which shapes make the strongest structures. Try your hand at building, and have fun demolishing some of your structures as you learn how architects make buildings strong.

### Crime Scene Investigators (HMNS and Sugar Land)

Learn how to lift and develop fingerprints, sample soils, cast footprints and teeth, and make rope impressions. Assemble your own crime kit and use your skills to collect clues at a crime scene in the Museum. **Please note: This class may discuss real life issues of crime and death.**

### Dino Claws and Shark Jaws (HMNS)

From sauropods to sabertooths, dig into the past as you unearth what it takes to be a paleontologist. Make your own casts of fossils and add them to your very own fossil collection. Meet T. rex face to face. Discover prehistoric life that still exists today and go on a mock dig to discover authentic fossils.

### Extreme Machines (HMNS)

If you like gadgets, gizmos and brilliant ideas, then this is the camp for you! Discover inventions by kids and famous inventors. Solve design challenges and build your own flashlight from scratch. Experiment with electricity, motors, and more to discover how things work, from light bulbs to submarines. Get creative as you plan and build your own ingenious inventions.

### Fast and Furious (HMNS)

Become a junior engineer and design speedy motion machines. Create model cars, boats, and planes using rubber bands, soap, and other unexpected items. Discover the best way to protect your passengers from car-crunching crashes and test ideas in our egg drop. Rule the road as you build and test a model racecar.

### Freeze Frame (HMNS)

Ditch the digital; old fashioned photography is where it's at! Discover the inner-workings of a camera by dissecting an eyeball, construct and use a pinhole camera to develop your own amazing photographs, use the sun to make prints, design a t-shirt using photosensitive paint, and much more in this fantastic photo finish experience!

**Camp includes dissection.**

### Kitchen Chemistry (HMNS)

This is science you can really sink your teeth into! Are you ready to cook up some crazy chemical concoctions? Learn what kind of mold actually tastes good, what flowers are safe to eat, and what cool chemical reactions happen as we cook. Explore cuisine from other countries; grow your own food and much more. **This class is not recommended for children with food allergies or food sensitivities. This camp includes optional bug tasting activity.**

### Lego™ Robotics (HMNS and Sugar Land)

In a computerized lab setting learn beginning NXT Robotics Engineering as you and your partner build models with our LEGO MINDSTORMS NXT™ system. Use a computer to program your model to obey precisely your every command! You and your partner will compete with other teams to finish challenges and earn the highest scores by the end of the week. You may have taken this class before, but this year, Lego™ Robotics has been extended to a full day, giving you and your team more time to build, program, and compete using more sensors than ever before!

### Master Spy Camp (HMNS and Sugar Land)

Your assignment, should you choose to accept it, is to recover secret information while escaping detection. Learn mysterious codes to send covert messages to your friends. Build spy gadgets like alarms to protect your private lair from intruders, and then create a disguise to hide your true identity.

### Nature's Fury (HMNS)

Join in on our exciting interactive journey to the center of the Earth where we'll explore earthquakes, volcanoes, tsunamis and more.

### Puzzler (HMNS)

Try your hand at and play the best strategy games from around the world. Construct some of your own games to play and take home. Engage in challenging puzzles and problems and discover how to solve them. Get ready for tournament play on Friday as you challenge your friends and exercise your new skills.

### Space Pilot (HMNS)

Get ready to be an astronaut. As part of your training, you will need to operate robots, conduct experiments and construct probes. Get ready for your Mars mission by studying the solar system, stars, and amazing features of the Red planet. On Friday you will use all your training to complete the journey to Mars aboard the *SS Legacy* in the Expedition Center.

### Star Warriors Academy (HMNS and Sugar Land)

Is it really possible to control things with the power of your mind? Learn science fact from science fiction when you explore the planets, creatures, androids and vehicles in imaginary galaxies as you learn about the real planets, animals, robots and cool transportation in your own backyard.

### Super Science Magic (HMNS and Sugar Land)

Learn the physics and chemistry behind magic as you make things appear, disappear, levitate, and change colors using magnets, mirrors, and more. Try your hand at juggling and card tricks. On Friday, perform your 'impossible' tricks in a science magic show!

### Survivor (HMNS)

Alone, marooned, scared, cold, and hungry? Can you survive? You betcha! You'll learn to distill drinking water and make it into a refreshing drink that would quench any thirst. Participate in an indoor campfire cookout. Learn to navigate by the stars, tell time with the sun, and build your own compass. Make your own sunscreen, and find out what kinds of bugs make good snacks. Participate in Friday's survivor competition. **Camp includes optional bug tasting activity.**

### Treasure Hunters (HMNS)

From El Dorado to Russia and beyond, experience the thrill of the hunt! Search for lost "loot" and discover the secrets of the Museum's hidden treasures as you experiment with tools of the trade from GPS to metal detectors and more!

### Weird Science (HMNS)

Explore what makes the human body both weird and wonderful! Dissect a sheep's brain and a cow's eyeball to discover how these organs work. Learn why humans have boogers and blisters, build a model skeleton that moves, create fake wounds to scare your parents, and learn weird and wacky body science facts. **Camp includes dissection.**

## Wizard Science Academy (HMNS and Sugar Land)

Step into an amazing world of wizarding as you learn the real science behind the care of wizard pets, herbs, herpetology and the chemistry behind magical potions. Create your own wand, hat and book of science spells in this week of wonders.

## AGES 10 – 12

Campers must be at least 10 years of age or entering grades 5, 6, or 7 by September 1, 2015

### Advanced Lego™ Robotics (HMNS)

You'll use RobotC, a new interface writing code (just like real computer programmers do) to control your LEGO Mindstorms NXT™ robot! Put your new skills to the test as you compete with other teams by completing programming challenges using RobotC and the Robot Educator Model. Explore computer programming while solving problems and winning challenges with your team.

### Archeology 101 (HMNS)

Dead men really do tell tales! Come explore the science of archeology from shards to skulls and beyond. Discover what you can learn from garbage, experiment with ways to clean artifacts, and participate in mock digs. Take a fieldtrip to the George Ranch Historical Park on Friday. The bus will leave at 9:00 a.m. and return at 4:00 p.m.

### Backstage Pass (HMNS)

You are an investigative journalist assigned to go behind the scenes with your all-access pass! Visit areas the public never sees – the Wortham Giant Screen projection booth, the Butterfly Center, the inner workings of the Planetarium, and the Live Animal Room as you learn the secrets and science behind the Museum. Interview museum curators, take photographs with a digital camera, and then compile your investigation on your very own website. You never know what you will discover!

### Crime Scene Investigators (HMNS and Sugar Land)

Learn to lift and develop fingerprints, sample soils, cast footprints and teeth, and make rope impressions. Use special software to create a face to match the descriptions of witnesses. Assemble your own crime kit and use your skills to collect clues at a crime scene in the Museum.

**Please note: this class may discuss real life issues of crime and death.**

### Design and Destroy (HMNS)

Try your hand at design and architecture as you create your own awe-inspiring structures. Explore the science of shape and make tessellations like M. C. Escher. Plan and build model bridges, skyscrapers and more. Test your projects to see how much strain they can take before they crumble, and discover the fatal flaws of structures throughout history. A K'NEX™ bridge kit is yours to keep.

### Extreme Machines (HMNS)

If you like gadgets, gizmos, and brilliant ideas, then this is the camp for you! Discover inventions by kids and famous inventors. Solve design challenges and experiment with electricity, motors, and more to discover how things work. Get creative and plan your own ingenious inventions.

## Full Tilt Physics (HMNS)

How fast is a speeding bullet? Explore the science of speed from acceleration and air resistance to collisions and crashes. Design and build hovercrafts, cars, planes, and other vehicles then modify them to maximize their velocity. The race is on!

### Get Set to be a Vet (HMNS)

Do you know what it takes to keep animals healthy and happy? Is your lizard too lazy? Is your Beta acting fishy? Examine the living animals of HMNS as you learn what a vet does to take care of our animal friends. Besides plenty of hands-on experience with live animals, you'll perform dissections to learn the inner workings of an animal's body. **Camp includes dissection.**

### Leonardo's Workshop (HMNS)

Inventor, artist, architect, genius- Leonardo Da Vinci is the ultimate Renaissance Man. Discover the range of Leonardo's talents as you try out some challenges of your own.

### Mad Scientist (HMNS and Sugar Land)

Step into the lab and start stirring things up! Explore chemical reactions that bubble, pop, and ooze, then create your own slime collection. Concoct mixtures that change color, heat up, and glow in the dark. Find out what silly putty and gummy bears have in common and discover super cold science.

### Master Spy Camp (HMNS and Sugar Land)

Your assignment, should you choose to accept it, is to recover secret information while escaping detection. Learn mysterious codes to send covert messages to your friends. Build spy gadgets like alarms to protect your private lair from intruders, and then create a disguise to hide your true identity.

### Medieval Madness (HMNS)

Become a Medieval apprentice as you discover the fascinating world of the Middle Ages. Build your own siege machine, learn how to make chain mail and explore how the Black Plague devastated Europe. Dip your own candles and cook delicacies from the "Dark Ages". Be a herald as you investigate heraldry and make your own shield.

### Museum District Explorers (HMNS)

Explore a different museum each day of the week in this exclusive camp! In the classroom you'll participate in experiments and activities and discover even more about the day's adventures. On Thursday, spend the night at HMNS to find what secrets our exhibit halls hold after dark! This camp has limited availability, so sign up early.

### Paleontology 101 (HMNS)

Explore the mysteries of prehistoric Earth. Discover what happened to the woolly mammoths and find out which ancient creatures once roamed your own backyard! Excavate your own Green River fish from stone in a kit you get to bring home.

## Senior Space Commanders (HMNS)

Become a rocket scientist as you discover how to make a rocket go higher and faster. Test different types of rockets and build your own. During your week in astronaut training, participate in many "space experiences" as you prepare for your Friday mission aboard the *SS Legacy* in the Expedition Center.

## Star Warriors Academy II (HMNS)

Proven yourself to be a true warrior and graduated from the academy? Join the warrior council to take part in daily warrior challenges, hone your saber skills and experiment with ways to power your space crafts. Study extreme creatures close-up and help lead Friday's Star Warrior Academy graduation festivities.

**Class includes dissection.**

## Test for the Best (HMNS)

Do you need a blindfold for a blind taste test? Will that new game break the first day you use it? Which towel is really the "quicker picker-upper?" Invent ways to test which product is strongest, fizziest, or 'funnest' and try them out on everything from soda to school supplies to toys as you decide "to buy or not to buy." Discover sneaky tricks advertisers use to get kids and teens to buy their products.

## Wizard Science Academy II (HMNS and Sugar Land)

This camp is for our older wizards. Join us as we explore wizard pets, herbs, herpetology, the physics of flight and the chemistry behind magical potions. Create your own book of potions and craft an awesome custom wand that you can take home!

## LOCATIONS

Xploration Summer Camps are available at the following locations:

### HMNS

5555 Hermann Park Drive  
Houston, TX 77030

Located in Hermann Park across the street from Miller Outdoor Theater with close proximity to Highways 59, 288 and the 610 Loop.

### HMNS SUGAR LAND

13016 University Blvd  
Sugar Land, TX 77479

Located north of Highway 59, at the corner of University Blvd and New Territory Blvd. Before and After Camps provide a fun and safe experience for campers ages 6-12 who need to arrive before 10 a.m. or stay after 3 p.m. All campers are supervised by adults. Before and After Camp is only available to registered Xplorations campers.

## BEFORE AND AFTER CAMP

### BEFORE CAMP

**\$50, 8 - 10 a.m., Monday - Friday**

Campers must be checked in at the sign-in table in the museum each morning. Campers are supervised as they play games or watch a movie. Campers are escorted to their camp room at 10 a.m.

### AFTER CAMP

**\$60, 3 - 5:30 p.m., Monday - Friday**

Campers are escorted to the after camp classrooms at the end of the camp day. Campers are supervised as they play games or do craft activities in the classrooms. A snack is provided in the afternoon. **Campers must be picked up by 5:30 p.m., after which an extra charge of \$1.00 per minute will be applied.**

## FAQS

### REGISTRATION

#### How can I be sure to get the camps I want?

The best way is to be an upper level member (Voyager or above) and register on-line during priority registration.

#### How can I find out which camps are available?

The HMNS on-line ticketing system will indicate which camps are available. If a camp date is not listed, it has been filled. For further information, please call the summer camp registrar at 713-639-4625. We do not offer a waiting list.

#### What is the best way to register a carpool so that all children have classes on the same week?

Register online the same day as early as possible. Unfortunately there is no guarantee that all children will get the camps they want.

#### May I register my gifted child for an older age group?

No. We strictly enforce age requirements. Your child must be the correct age or entering the stated grade level of the camp.

#### I just need Before or After Camp for one day. Can I do that?

Yes, but we require payment for the entire week.

#### Can you accommodate my child with special needs?

Yes. We are happy to accommodate children with special needs but we ask that you notify the Camp Manager of your child's needs prior to your child's first day of camp. Please help us help your child by notifying us of any allergies, accessibility concerns, behavioral, psychological or emotional conditions, or other special needs. Please call 713-639-4651 to speak with the Camp Manager.

While we hope to offer these camps to as wide a range of children as possible, it is not possible for us to offer one-on-one care. In the case of severe food allergies, it is not possible for us to monitor the food other children bring into camp. The Museum is **NOT** responsible for administering medication to children. Consult a pediatrician about altering the child's dosage so that medication can be administered outside of camp hours.



## **GETTING TO CAMP**

### **How do I get to the Museum?**

You can find directions on our website [www.hmns.org](http://www.hmns.org) or call 713-639-4601.

## **CAMP DAY**

### **What are the qualifications of your teachers and assistants?**

All of our teachers are certified school teachers or museum professionals. They all have experience working with children and enjoy hands-on interactive activities.

### **How are campers supervised?**

Campers are supervised at all times and are escorted on restroom breaks. For your child's security all campers **MUST** be escorted to and from their camp room by a parent or guardian and signed in and out **EVERY DAY**. Please complete the sign in card with all relevant contact information on the first day of camp and update your child's contact information as needed throughout the camp week. In the event of an emergency, we want to have the most accurate contact information for you.

### **May parents stay in the classroom?**

No. If you feel that your child is unable to remain in camp without you for more than a few minutes, you probably should wait a year before you send him/her to camp. Our weeklong camps promote independent learning and socialization. Parents are not allowed to remain in the classroom during camp hours.

### **What are the behavior expectations for campers?**

Camper expectations are posted in each room and are emphasized throughout the week. Classroom rules are: listen carefully and follow instructions, participate in classroom activities, respect others, respect property, and Have Fun Learning. In case of a severe behavior problem, we will call you and ask you to pick up your child. At our discretion, your child may be allowed to return to camp the following day.

### **Whom may I contact during the day if I need to leave an emergency message concerning my child?**

Please call the Education Office at 713-639-4651 or 713-639-4625 and a staff member will deliver your message to the appropriate person.

### **Can my child bring valuables to camp like electronic devices?**

Bringing valuables like music players, electronic games, cell phones, etc. to camp for use during lunchtime, before and after camp is at the discretion of the parent and HMNS is not responsible for loss or damage to camper's valuables.

## **LUNCH**

### **Does my child need to bring a lunch?**

Campers ages 6 -12 are supervised in their camp room while they eat lunch. Camper's may bring a lunch or pre-order a meal to be delivered by McDonalds™ at the main museum location and Chick-Fil-A™ at the Sugar Land location.

### **How do I order a lunch for my child from McDonalds™ at the main museum location?**

Campers are not permitted to purchase a meal during supervised lunchtime. McDonalds™ orders must be placed in person at McDonalds™ in the Museum on Mondays before 10:15 a.m. Order forms are available on our website or at the McDonalds™ in the Museum.

### **How do I order a lunch for my child from Chick-Fil-A™ at the Sugar Land location?**

A Chick-Fil-A™ representative will be available at HMNS Sugar Land on Monday mornings from 9-10:15 A.M. Orders are cash only.

# CAMP SCHEDULE

**HMNS** **WEEK 1** JUNE 1 - 5

AGE	CAMP TITLE	TIME	FEE
			MEMBER / NON-MEMBER
6-7	Art Smart	10am - 3pm	\$250 / \$290
6-7	Booms and Blastoffs	10am - 3pm	\$250 / \$290
6-7	Calamity Camp	10am - 3pm	\$250 / \$290
6-7	Junior Paleontologist	10am - 3pm	\$250 / \$290
6-7	Junior Science Magic	10am - 3pm	\$255 / \$295
6-7	Man's Best Friend	10am - 3pm	\$250 / \$290
6-7	Roving Robots	10am - 3pm	\$255 / \$295
8-9	Bedazzled	10am - 3pm	\$260 / \$300
8-9	Build it Big	10am - 3pm	\$250 / \$290
8-9	Dino Claws and Shark Jaws	10am - 3pm	\$245 / \$285
8-9	Lego Robotics	10am - 3pm	\$275 / \$315
8-9	Master Spy Camp	10am - 3pm	\$255 / \$295
8-9	Space Pilot	10am - 3pm	\$255 / \$295
10-12	Archaeology 101	10am - 3pm	\$265 / \$305
10-12	Backstage Pass	10am - 3pm	\$265 / \$305
10-12	Extreme Machines	10am - 3pm	\$270 / \$310
10-12	Get Set to Be A Vet	10am - 3pm	\$275 / \$315
10-12	Mad Scientist	10am - 3pm	\$265 / \$305
10-12	Master Spy Camp	10am - 3pm	\$255 / \$295

**For registration assistance,  
email [xplorations@hmns.org](mailto:xplorations@hmns.org)  
or call 713.639.4625**

# WEEK 2 JUNE 8 - 12

HMNS

AGE	CAMP TITLE	TIME	FEE <small>MEMBER / NON-MEMBER</small>
6-7	Art Smart	10am - 3pm	\$250 / \$290
6-7	Booms and Blastoffs	10am - 3pm	\$250 / \$290
6-7	Build It Big	10am - 3pm	\$250 / \$290
6-7	Calamity Camp	10am - 3pm	\$250 / \$290
6-7	Creepy Crawlies	10am - 3pm	\$250 / \$290
6-7	Junior Paleontologist	10am - 3pm	\$250 / \$290
6-7	Junior Science Magic	10am - 3pm	\$255 / \$295
6-7	Man's Best Friend	10am - 3pm	\$250 / \$290
6-7	Roving Robots	10am - 3pm	\$255 / \$295
6-7	Star Warriors Academy	10am - 3pm	\$255 / \$295
6-7	Wizard Science Academy	10am - 3pm	\$250 / \$290
8-9	Bedazzled	10am - 3pm	\$260 / \$300
8-9	Dino Claws and Shark Jaws	10am - 3pm	\$245 / \$285
8-9	Extreme Machines	10am - 3pm	\$270 / \$310
8-9	Lego Robotics	10am - 3pm	\$275 / \$315
8-9	Master Spy Camp	10am - 3pm	\$255 / \$295
8-9	Space Pilot	10am - 3pm	\$255 / \$295
8-9	Super Science Magic	10am - 3pm	\$255 / \$295
8-9	Weird Science	10am - 3pm	\$255 / \$295
10-12	Archaeology 101	10am - 3pm	\$265 / \$305
10-12	Backstage Pass	10am - 3pm	\$265 / \$305
10-12	Crime Scene Investigators	10am - 3pm	\$265 / \$305
10-12	Get Set to Be A Vet	10am - 3pm	\$275 / \$315
10-12	Mad Scientist	10am - 3pm	\$265 / \$305
10-12	Master Spy Camp	10am - 3pm	\$255 / \$295
10-12	Medieval Madness	10am - 3pm	\$255 / \$295
10-12	Test For the Best	10am - 3pm	\$250 / \$290

SUGAR LAND

AGE	CAMP TITLE	TIME	FEE <small>MEMBER / NON-MEMBER</small>
6-7	Booms and Blastoffs	10am - 3pm	\$250 / \$290
6-7	Junior Science Magic	10am - 3pm	\$255 / \$295
6-7	Roving Robots	10am - 3pm	\$255 / \$295
8-9	Master Spy Camp	10am - 3pm	\$255 / \$295
10-12	Wizard Science Academy	10am - 3pm	\$260 / \$300

# WEEK 3 JUNE 15 - 19

SUGAR LAND

AGE	CAMP TITLE	TIME	FEE <small>MEMBER / NON-MEMBER</small>
6-7	Booms and Blastoffs	10am - 3pm	\$250 / \$290
6-7	Junior Science Magic	10am - 3pm	\$255 / \$295
6-7	Roving Robots	10am - 3pm	\$255 / \$295
8-9	Lego Robotics	10am - 3pm	\$275 / \$315
8-9	Wizard Science Academy	10am - 3pm	\$250 / \$290

# WEEK 4 JUNE 22 - 26

HMNS

AGE	CAMP TITLE	TIME	FEE
			MEMBER / NON-MEMBER
6-7	Art Smart	10am - 3pm	\$250 / \$290
6-7	Booms and Blastoffs	10am - 3pm	\$250 / \$290
6-7	Build It Big	10am - 3pm	\$250 / \$290
6-7	Calamity Camp	10am - 3pm	\$250 / \$290
6-7	Creepy Crawlies	10am - 3pm	\$250 / \$290
6-7	Junior Paleontologist	10am - 3pm	\$250 / \$290
6-7	Junior Science Magic	10am - 3pm	\$255 / \$295
6-7	Kitchen Chemistry	10am - 3pm	\$260 / \$300
6-7	Man's Best Friend	10am - 3pm	\$250 / \$290
6-7	Roving Robots	10am - 3pm	\$255 / \$295
6-7	Star Warriors Academy	10am - 3pm	\$255 / \$295
8-9	Bedazzled	10am - 3pm	\$260 / \$300
8-9	Crime Scene Investigators	10am - 3pm	\$265 / \$305
8-9	Dino Claws and Shark Jaws	10am - 3pm	\$245 / \$285
8-9	Extreme Machines	10am - 3pm	\$270 / \$310
8-9	Lego Robotics	10am - 3pm	\$275 / \$315
8-9	Master Spy Camp	10am - 3pm	\$255 / \$295
8-9	Space Pilot	10am - 3pm	\$255 / \$295
8-9	Super Science Magic	10am - 3pm	\$255 / \$295
8-9	Treasure Hunters	10am - 3pm	\$245 / \$285
8-9	Wizard Science Academy	10am - 3pm	\$250 / \$290
10-12	Backstage Pass	10am - 3pm	\$265 / \$305
10-12	Design and Destroy	10am - 3pm	\$265 / \$305
10-12	Get Set to Be A Vet	10am - 3pm	\$275 / \$315
10-12	Mad Scientist	10am - 3pm	\$265 / \$305
10-12	Master Spy Camp	10am - 3pm	\$255 / \$295
10-12	Medieval Madness	10am - 3pm	\$255 / \$295
10-12	Museum District Explorers	10am - 3pm	\$600 / \$720
10-12	Star Warriors Academy II	10am - 3pm	\$260 / \$300
10-12	Wizard Science Academy II	10am - 3pm	\$260 / \$300

## INTERESTED IN SUMMER SCOUTS?!

The Museum also offers summer classes for scouts. In these classes you can complete the requirements to earn badges and pins. Visit [www.hmns.org/summerscouts](http://www.hmns.org/summerscouts) or e-mail [scouts@hmns.org](mailto:scouts@hmns.org) for more information.

# WEEK 5 JUNE 29 - JULY 2

HMNS

AGE	CAMP TITLE	TIME	FEE <small>MEMBER / NON-MEMBER</small>
6-7	Art Smart	10am - 3pm	\$200 / \$232
6-7	Booms and Blastoffs	10am - 3pm	\$200 / \$232
6-7	Build It Big	10am - 3pm	\$200 / \$232
6-7	Creepy Crawlies	10am - 3pm	\$200 / \$232
6-7	Junior Paleontologist	10am - 3pm	\$200 / \$232
6-7	Junior Science Magic	10am - 3pm	\$204 / \$236
6-7	Kitchen Chemistry	10am - 3pm	\$208 / \$240
6-7	Roving Robots	10am - 3pm	\$204 / \$236
6-7	Space Cadet	10am - 3pm	\$200 / \$232
6-7	Star Warriors Academy	10am - 3pm	\$204 / \$236
6-7	Wizard Science Academy	10am - 3pm	\$200 / \$232
8-9	Bedazzled	10am - 3pm	\$208 / \$240
8-9	Fast and Furious	10am - 3pm	\$204 / \$236
8-9	Lego Robotics	10am - 3pm	\$220 / \$252
8-9	Master Spy Camp	10am - 3pm	\$204 / \$236
8-9	Super Science Magic	10am - 3pm	\$204 / \$236
8-9	Survivor	10am - 3pm	\$196 / \$228
8-9	Treasure Hunters	10am - 3pm	\$196 / \$228
8-9	Weird Science	10am - 3pm	\$204 / \$236
10-12	Backstage Pass	10am - 3pm	\$212 / \$244
10-12	Crime Scene Investigators	10am - 3pm	\$212 / \$244
10-12	Design and Destroy	10am - 3pm	\$212 / \$244
10-12	Extreme Machines	10am - 3pm	\$216 / \$248
10-12	Leonardo's Workshop	10am - 3pm	\$200 / \$232
10-12	Master Spy Camp	10am - 3pm	\$204 / \$236
10-12	Paleontology 101	10am - 3pm	\$204 / \$236
10-12	Star Warriors Academy II	10am - 3pm	\$208 / \$240
10-12	Wizard Science Academy II	10am - 3pm	\$208 / \$240

SUGAR LAND

AGE	CAMP TITLE	TIME	FEE <small>MEMBER / NON-MEMBER</small>
6-7	Junior Science Magic	10am - 3pm	\$204 / \$236
6-7	Waterworks	10am - 3pm	\$200 / \$232
8-9	Master Spy Camp	10am - 3pm	\$204 / \$236
8-9	Wizard Science Academy	10am - 3pm	\$200 / \$232
10-12	Crime Scene Investigators	10am - 3pm	\$212 / \$244

**PLEASE NOTE!**  
**The week of June 29 is a four day week due to the 4th of July holiday.**

# WEEK 6 JULY 6 - 10

SUGAR LAND

AGE	CAMP TITLE	TIME	FEE
			MEMBER / NON-MEMBER
6-7	Junior Science Magic	10am - 3pm	\$255 / \$295
6-7	Waterworks	10am - 3pm	\$250 / \$290
6-7	Wizard Science Academy	10am - 3pm	\$250 / \$290
8-9	Crime Scene Investigators	10am - 3pm	\$265 / \$305
8-9	Lego Robotics	10am - 3pm	\$275 / \$315

# WEEK 7 JULY 13 - 17

HMNS

AGE	CAMP TITLE	TIME	FEE
			MEMBER / NON-MEMBER
6-7	Art Smart	10am - 3pm	\$250 / \$290
6-7	Booms and Blastoffs	10am - 3pm	\$250 / \$290
6-7	Build It Big	10am - 3pm	\$250 / \$290
6-7	Creepy Crawlies	10am - 3pm	\$250 / \$290
6-7	Junior Paleontologist	10am - 3pm	\$250 / \$290
6-7	Junior Science Magic	10am - 3pm	\$255 / \$295
6-7	Kitchen Chemistry	10am - 3pm	\$260 / \$300
6-7	Mummies & Mysteries	10am - 3pm	\$250 / \$290
6-7	Roving Robots	10am - 3pm	\$255 / \$295
6-7	Space Cadet	10am - 3pm	\$250 / \$290
6-7	Super Hero Science	10am - 3pm	\$240 / \$280
6-7	Wizard Science Academy	10am - 3pm	\$250 / \$290
8-9	Extreme Machines	10am - 3pm	\$270 / \$310
8-9	Fast and Furious	10am - 3pm	\$255 / \$295
8-9	Lego Robotics	10am - 3pm	\$275 / \$315
8-9	Master Spy Camp	10am - 3pm	\$255 / \$295
8-9	Nature's Fury	10am - 3pm	\$250 / \$290
8-9	Star Warriors Academy	10am - 3pm	\$255 / \$295
8-9	Super Science Magic	10am - 3pm	\$255 / \$295
8-9	Survivor	10am - 3pm	\$245 / \$285
8-9	Treasure Hunters	10am - 3pm	\$245 / \$285
8-9	Weird Science	10am - 3pm	\$255 / \$295
10-12	Backstage Pass	10am - 3pm	\$265 / \$305
10-12	Crime Scene Investigators	10am - 3pm	\$265 / \$305
10-12	Design and Destroy	10am - 3pm	\$265 / \$305
10-12	Full Tilt Physics	10am - 3pm	\$260 / \$300
10-12	Get Set to Be A Vet	10am - 3pm	\$275 / \$315
10-12	Leonardo's Workshop	10am - 3pm	\$250 / \$290
10-12	Master Spy Camp	10am - 3pm	\$255 / \$295
10-12	Paleontology 101	10am - 3pm	\$255 / \$295
10-12	Wizard Science Academy II	10am - 3pm	\$260 / \$300

# WEEK 8 JULY 20 - JULY 24

**HMNS**

AGE	CAMP TITLE	TIME	FEE <small>MEMBER / NON-MEMBER</small>
6-7	Art Smart	10am - 3pm	\$250 / \$290
6-7	Booms and Blastoffs	10am - 3pm	\$250 / \$290
6-7	Build It Big	10am - 3pm	\$250 / \$290
6-7	Junior Paleontologist	10am - 3pm	\$250 / \$290
6-7	Junior Science Magic	10am - 3pm	\$255 / \$295
6-7	Mummies & Mysteries	10am - 3pm	\$250 / \$290
6-7	Roving Robots	10am - 3pm	\$255 / \$295
6-7	Space Cadet	10am - 3pm	\$250 / \$290
6-7	Star Warriors Academy	10am - 3pm	\$255 / \$295
6-7	Super Hero Science	10am - 3pm	\$240 / \$280
6-7	Waterworks	10am - 3pm	\$250 / \$290
8-9	Amazing Animals	10am - 3pm	\$250 / \$290
8-9	Extreme Machines	10am - 3pm	\$270 / \$310
8-9	Fast and Furious	10am - 3pm	\$255 / \$295
8-9	Kitchen Chemistry	10am - 3pm	\$260 / \$300
8-9	Lego Robotics	10am - 3pm	\$275 / \$315
8-9	Master Spy Camp	10am - 3pm	\$255 / \$295
8-9	Nature's Fury	10am - 3pm	\$250 / \$290
8-9	Survivor	10am - 3pm	\$245 / \$285
8-9	Treasure Hunters	10am - 3pm	\$245 / \$285
8-9	Weird Science	10am - 3pm	\$255 / \$295
8-9	Wizard Science Academy	10am - 3pm	\$250 / \$290
10-12	Backstage Pass	10am - 3pm	\$265 / \$305
10-12	Crime Scene Investigators	10am - 3pm	\$265 / \$305
10-12	Design and Destroy	10am - 3pm	\$265 / \$305
10-12	Full Tilt Physics	10am - 3pm	\$260 / \$300
10-12	Get Set to Be A Vet	10am - 3pm	\$275 / \$315
10-12	Wizard Science Academy II	10am - 3pm	\$260 / \$300

**SUGAR LAND**

AGE	CAMP TITLE	TIME	FEE <small>MEMBER / NON-MEMBER</small>
6-7	Waterworks	10am - 3pm	\$250 / \$290
6-7	Wizard Science Academy	10am - 3pm	\$250 / \$290
8-9	Master Spy Camp	10am - 3pm	\$255 / \$295
8-9	Star Warriors Academy	10am - 3pm	\$255 / \$295
10-12	Mad Scientist	10am - 3pm	\$265 / \$305

# WEEK 9 JULY 27 - JULY 31

SUGAR LAND

AGE	CAMP TITLE	TIME	FEE
			MEMBER / NON-MEMBER
6-7	Build it Big	10am - 3pm	\$250 / \$290
6-7	Junior Paleontologist	10am - 3pm	\$250 / \$290
6-7	Star Warriors Academy	10am - 3pm	\$255 / \$295
8-9	Lego Robotics	10am - 3pm	\$275 / \$315
8-9	Super Science Magic	10am - 3pm	\$255 / \$295

# WEEK 10 AUGUST 3 - 7

HMNS

AGE	CAMP TITLE	TIME	FEE
			MEMBER / NON-MEMBER
6-7	Booms and Blastoffs	10am - 3pm	\$250 / \$290
6-7	Build It Big	10am - 3pm	\$250 / \$290
6-7	Junior Paleontologist	10am - 3pm	\$250 / \$290
6-7	Junior Science Magic	10am - 3pm	\$255 / \$295
6-7	Master Museum Camp	10am - 3pm	\$240 / \$280
6-7	Mummies & Mysteries	10am - 3pm	\$250 / \$290
6-7	Roving Robots	10am - 3pm	\$255 / \$295
6-7	Science of the Round Table	10am - 3pm	\$250 / \$290
6-7	Super Hero Science	10am - 3pm	\$240 / \$280
6-7	Waterworks	10am - 3pm	\$250 / \$290
6-7	Wizard Science Academy	10am - 3pm	\$250 / \$290
8-9	Amazing Animals	10am - 3pm	\$250 / \$290
8-9	Crime Scene Investigators	10am - 3pm	\$265 / \$305
8-9	Freeze Frame	10am - 3pm	\$265 / \$305
8-9	Kitchen Chemistry	10am - 3pm	\$260 / \$300
8-9	Master Spy Camp	10am - 3pm	\$255 / \$295
8-9	Nature's Fury	10am - 3pm	\$250 / \$290
8-9	Puzzler	10am - 3pm	\$235 / \$275
8-9	Star Warriors Academy	10am - 3pm	\$255 / \$295
8-9	Survivor	10am - 3pm	\$245 / \$285
8-9	Wizard Science Academy	10am - 3pm	\$250 / \$290
10-12	Advanced Lego Robotics	10am - 3pm	\$280 / \$320
10-12	Backstage Pass	10am - 3pm	\$265 / \$305
10-12	Design and Destroy	10am - 3pm	\$265 / \$305
10-12	Full Tilt Physics	10am - 3pm	\$260 / \$300
10-12	Get Set to Be A Vet	10am - 3pm	\$275 / \$315
10-12	Museum District Explorers	10am - 3pm	\$600 / \$720
10-12	Senior Space Commanders	10am - 3pm	\$255 / \$295
10-12	Wizard Science Academy II	10am - 3pm	\$260 / \$300



# WEEK 11 AUGUST 10 - 14

HMNS	AGE	CAMP TITLE	TIME	FEE
				MEMBER / NON-MEMBER
	6-7	Booms and Blastoffs	10am - 3pm	\$250 / \$290
	6-7	Junior Paleontologist	10am - 3pm	\$250 / \$290
	6-7	Junior Science Magic	10am - 3pm	\$255 / \$295
	6-7	Kitchen Chemistry	10am - 3pm	\$260 / \$300
	6-7	Master Museum Camp	10am - 3pm	\$240 / \$280
	6-7	Mummies & Mysteries	10am - 3pm	\$250 / \$290
	6-7	Roving Robots	10am - 3pm	\$255 / \$295
	6-7	Science of the Round Table	10am - 3pm	\$250 / \$290
	6-7	Wizard Science Academy	10am - 3pm	\$250 / \$290
	8-9	Amazing Animals	10am - 3pm	\$250 / \$290
	8-9	Build it Big	10am - 3pm	\$250 / \$290
	8-9	Freeze Frame	10am - 3pm	\$265 / \$305
	8-9	Master Spy Camp	10am - 3pm	\$255 / \$295
	8-9	Puzzler	10am - 3pm	\$235 / \$275
	8-9	Star Warriors Academy	10am - 3pm	\$255 / \$295
	8-9	Survivor	10am - 3pm	\$245 / \$285
	8-9	Weird Science	10am - 3pm	\$255 / \$295
	8-9	Wizard Science Academy	10am - 3pm	\$250 / \$290
	10-12	Advanced Lego Robotics	10am - 3pm	\$280 / \$320
	10-12	Backstage Pass	10am - 3pm	\$265 / \$305
	10-12	Crime Scene Investigators	10am - 3pm	\$265 / \$305
	10-12	Get Set to Be A Vet	10am - 3pm	\$275 / \$315
	10-12	Senior Space Commanders	10am - 3pm	\$255 / \$295
	10-12	Test for the Best	10am - 3pm	\$250 / \$290
SUGAR LAND	AGE	CAMP TITLE	TIME	FEE
				MEMBER / NON-MEMBER
	6-7	Build it Big	10am - 3pm	\$250 / \$290
	6-7	Junior Paleontologist	10am - 3pm	\$250 / \$290
	8-9	Star Warriors Academy	10am - 3pm	\$255 / \$295
	8-9	Super Science Magic	10am - 3pm	\$255 / \$295
	10-12	Master Spy Camp	10am - 3pm	\$255 / \$295

**All campers must have a completed Xplorations Camper Health Record Form on file prior to beginning camp. Children with incomplete or missing Xplorations Camper Health Record Forms will not be permitted to participate in camp activities.**

**NO REFUNDS OR EXCHANGES.**

# CAMPER HEALTH RECORD FORM

A completed Camper Health Record Form must be on file with the Explorations Office prior to each child beginning camp. Completed Camper Health Record Forms can be faxed to 713-639-4681, emailed as an attachment to: [explorations@hmns.org](mailto:explorations@hmns.org), or mailed or dropped off to: Explorations, HMNS, 5555 Hermann Park Drive, Houston, TX 77030

## 1. CAMPER INFORMATION PLEASE PRINT NEATLY

Camper's Name \_\_\_\_\_  
(First) (Middle) (Last)  
Date of Birth \_\_\_\_\_ M/F \_\_\_\_\_ Contact Parent/Guardian \_\_\_\_\_  
Address \_\_\_\_\_  
City \_\_\_\_\_ State \_\_\_\_\_ Zip Code \_\_\_\_\_  
Emergency Phone #1 \_\_\_\_\_ Emergency Phone #2 \_\_\_\_\_

## 2. MEDICAL INSURANCE INFORMATION

This camper is covered by family medical/hospital insurance. YES \_\_\_\_\_ NO \_\_\_\_\_  
Insurance Company \_\_\_\_\_  
Policy Number \_\_\_\_\_  
Subscriber \_\_\_\_\_  
Insurance company phone number: \_\_\_\_\_

## 3. HEALTH CARE PROVIDERS

Name of camper's primary doctor(s): \_\_\_\_\_ Phone \_\_\_\_\_  
Name of dentist(s): \_\_\_\_\_ Phone \_\_\_\_\_  
Name of orthodontist(s): \_\_\_\_\_ Phone \_\_\_\_\_

## 4. ALLERGIES AND DIET

\_\_\_\_ No known allergies.  
\_\_\_\_ This camper is allergic to: Food \_\_\_\_\_ Medicine \_\_\_\_\_ The environment (insect stings, hay fever, etc.) \_\_\_\_\_ Other \_\_\_\_\_  
Please describe what the camper is allergic to and the reaction seen \_\_\_\_\_  
\_\_\_\_\_  
In the case of food allergies, does the camper eat a regular diet? YES \_\_\_\_\_ NO \_\_\_\_\_ If no, please describe special food needs. \_\_\_\_\_  
\_\_\_\_\_  
Please indicate action to be taken and any medication to be administered in case of allergic reaction (mild or severe) \_\_\_\_\_  
\_\_\_\_\_  
Does the camper have an EpiPen? YES \_\_\_\_\_ NO \_\_\_\_\_

## 5. RESTRICTIONS

\_\_\_\_ I have reviewed the program of the camp and feel the camper can participate without restrictions.  
\_\_\_\_ I have reviewed the program of the camp and feel the camper can participate with the following restrictions or adaptations.  
(Please describe) \_\_\_\_\_  
\_\_\_\_\_

## 6. IMMUNIZATION HISTORY

**Provide the month and year for each immunization.**

**A copy of your child's immunization record from your health-care provider is also acceptable. Please attach to this form.**

Diphtheria, tetanus, pertussis (DTaP) or (TdaP): Dose 1 \_\_\_\_\_ Dose 2 \_\_\_\_\_ Dose 3 \_\_\_\_\_ Dose 4 \_\_\_\_\_ Dose 5 \_\_\_\_\_  
Tetanus Booster (dT) or (TdaP): Most Recent Dose \_\_\_\_\_  
Mumps, measles, rubella (MMR): Dose 1 \_\_\_\_\_ Dose 2 \_\_\_\_\_ Most Recent Dose \_\_\_\_\_  
Polio (IPV): Dose 1 \_\_\_\_\_ Dose 2 \_\_\_\_\_ Dose 3 \_\_\_\_\_ Dose 4 \_\_\_\_\_ Most Recent Dose \_\_\_\_\_  
Haemophilus influenza type B (HIB): Dose 1 \_\_\_\_\_ Dose 2 \_\_\_\_\_ Dose 3 \_\_\_\_\_ Dose 4 \_\_\_\_\_  
Pneumococcal (PCV): Dose 1 \_\_\_\_\_ Dose 2 \_\_\_\_\_ Dose 3 \_\_\_\_\_ Dose 4 \_\_\_\_\_  
Hepatitis B: Dose 1 \_\_\_\_\_ Dose 2 \_\_\_\_\_ Dose 3 \_\_\_\_\_  
Hepatitis A: Dose 1 \_\_\_\_\_ Dose 2 \_\_\_\_\_  
Varicella (chicken pox): Dose 1 \_\_\_\_\_ Dose 2 \_\_\_\_\_  
Meningococcal meningitis (MCV4): Dose 1 \_\_\_\_\_  
Tuberculosis (TB) test: Date: \_\_\_\_\_ Negative \_\_\_\_\_ Positive \_\_\_\_\_

My camper has been fully immunized and I have provided immunization record information.

Signature of Custodial Parent/Guardian \_\_\_\_\_  
Date \_\_\_\_\_ Relationship to Camper \_\_\_\_\_

## 7. MENTAL, EMOTIONAL, AND SOCIAL HEALTH

Has the camper:

1. Ever been treated for attention deficit disorder (ADD) or attention deficit/hyperactivity disorder (AD/HD)? YES \_\_\_\_\_ NO \_\_\_\_\_
2. Ever been treated for emotional or behavioral difficulties or an eating disorder? YES \_\_\_\_\_ NO \_\_\_\_\_
3. During the past 12 months, seen a professional to address mental/emotional health concerns? YES \_\_\_\_\_ NO \_\_\_\_\_
4. Had a significant life event that continues to affect the camper's life? YES \_\_\_\_\_ NO \_\_\_\_\_

Please explain YES answers: \_\_\_\_\_  
\_\_\_\_\_

Please provide in the space below any additional information about the camper's health that you think important or that may affect the camper's ability to fully participate in the camp program. Attach additional information if needed.

## 8. PARENT/GUARDIAN AUTHORIZATION FOR HEALTH CARE:

This health history is correct and accurately reflects the health status of the camper to whom it pertains. Camper has permission to participate in all camp activities except as noted by me/or an examining physician. If I cannot be reached in an emergency, I give permission to the camp to get camper to an emergency room in the most expedient manner possible. Additionally, I give permission for a physician selected by the camp to hospitalize and secure proper treatment for camper, including but not limited to ordering injections, anesthesia, surgery, x-rays and other tests related to the health of camper. I understand this information on this form will be shared on a "need to know" basis with camp staff. I give permission to photocopy this form. In addition, the camp has permission to obtain a copy of camper's health record from providers who treat camper and these providers may talk with the program's staff about camper's health status in the event of an emergency.

Signature of Custodial Parent/Guardian \_\_\_\_\_ Date \_\_\_\_\_ Relationship to Camper \_\_\_\_\_

# CAMPER REGISTRATION FORM

Completed Registration Forms can be faxed to 713-639-4681, emailed as an attachment to: [explorations@hmns.org](mailto:explorations@hmns.org), or mailed or dropped off to: Explorations, HMNS, 5555 Hermann Park Drive, Houston, TX 77030. Member pricing is reserved for the children or grandchildren of current HMNS members only. If you register on-line you do not need to submit this form.

## 1. CAMPER INFORMATION PLEASE PRINT NEATLY

Camper's Name \_\_\_\_\_ Date of Birth \_\_\_\_\_ M/F \_\_\_\_\_  
 Contact Parent/Guardian \_\_\_\_\_ Email \_\_\_\_\_  
 Address \_\_\_\_\_ By providing an email address, the guardian grants consent to be contacted via email by HMNS; the guardian may opt out of the Museum's email list by visiting <http://mailsystem.hmns.org> at any time  
 City \_\_\_\_\_ State \_\_\_\_\_ Zip Code \_\_\_\_\_  
 Day Phone \_\_\_\_\_ Cell Phone \_\_\_\_\_ Evening Phone \_\_\_\_\_  
 HMNS Membership ID # \_\_\_\_\_ Membership Level \_\_\_\_\_  
 Other Parent/Emergency Contact \_\_\_\_\_ Relationship to Camper \_\_\_\_\_  
 Day Phone \_\_\_\_\_ Cell Phone \_\_\_\_\_ Evening Phone \_\_\_\_\_

## 2. PROGRAM INFORMATION

Week	Camp Choice	Camp Title and Location	Camp Age	Camp Fee	Before/After Camp	Fee Total
1 <small>June 1 - 5</small>	1st Choice				<input type="checkbox"/> Before \$50	
	Alternate				<input type="checkbox"/> After \$60	
2 <small>June 8 - 12</small>	1st Choice				<input type="checkbox"/> Before \$50	
	Alternate				<input type="checkbox"/> After \$60	
3 <small>June 15 - 19</small>	1st Choice				<input type="checkbox"/> Before \$50	
	Alternate				<input type="checkbox"/> After \$60	
4 <small>June 22 - 26</small>	1st Choice				<input type="checkbox"/> Before \$50	
	Alternate				<input type="checkbox"/> After \$60	
5 <small>June 29 - July 2</small>	1st Choice				<input type="checkbox"/> Before \$40	
	Alternate				<input type="checkbox"/> After \$48	
6 <small>July 6 - 10</small>	1st Choice				<input type="checkbox"/> Before \$50	
	Alternate				<input type="checkbox"/> After \$60	
7 <small>July 13 - 17</small>	1st Choice				<input type="checkbox"/> Before \$50	
	Alternate				<input type="checkbox"/> After \$60	
8 <small>July 20 - 24</small>	1st Choice				<input type="checkbox"/> Before \$50	
	Alternate				<input type="checkbox"/> After \$60	
9 <small>July 27 - 31</small>	1st Choice				<input type="checkbox"/> Before \$50	
	Alternate				<input type="checkbox"/> After \$60	
10 <small>August 3 - 7</small>	1st Choice				<input type="checkbox"/> Before \$50	
	Alternate				<input type="checkbox"/> After \$60	
11 <small>August 10 - 14</small>	1st Choice				<input type="checkbox"/> Before \$50	
	Alternate				<input type="checkbox"/> After \$60	

## 3. PAYMENT INFORMATION

- I need to join or renew as a Member. I am enrolling as a:  
 \$95 Family  \$150 Voyager  \$250 Discoverer  \$500 Benefactor

Camp Fee	\$ _____
Membership Fee	\$ _____
<b>TOTAL FEES</b>	<b>\$ _____</b>

**PAYMENT IS DUE IN FULL AT TIME OF REGISTRATION**

Card # \_\_\_\_\_ CVV2# \_\_\_\_\_ Exp Date \_\_\_\_\_

- Visa  MasterCard  Discover  American Express \_\_\_\_\_

Name on card \_\_\_\_\_ Signature \_\_\_\_\_

Credit Card Billing Address \_\_\_\_\_

Credit cards ONLY. We are unable to accept checks, cash or debit cards. Call 713-639-4625 for assistance.

## 4. RELEASE AND CONSENT

The Houston Museum of Natural Science ("HMNS") is offering the course(s) as shown above (the "Course"). Although HMNS hopes that no student is ever injured or hurt, injuries are a possibility of participation in the Course. The risk of injuries is a risk that the students and their legal guardians voluntarily agree to assume in exchange for the privilege of registering for and participating in the Course. The students and their guardians understand and agree that this risk is not a risk that HMNS assumes and that HMNS is not responsible for any injuries to the students. Accordingly, \_\_\_\_\_ (the "guardian"), the legal guardian of \_\_\_\_\_ (the "student") voluntarily releases, discharges, and waives the right to sue HMNS and its directors, officers, employees, volunteers, agents and all persons acting by, through, under, or in concert with HMNS (collectively, the "Released Parties") for any and all losses, demands, claims, suits, causes of action, liability, costs, expenses, and judgments whether arising in equity, at common law, or by statute, under the law of contracts, torts, or property, for personal injury (including without limitation emotional distress), arising in favor of the guardian, the student, or anyone claiming through us based upon, in connection with, relating to or arising out of, directly or indirectly, the student's participation in the Course (collectively, "Claims") EVEN IF ANY SUCH CLAIMS ARE DUE TO THE RELEASED PARTIES' OWN NEGLIGENCE, STRICT LIABILITY WITHOUT REGARD TO FAULT, VIOLATION OF STATUTE, OR OTHER FAULT, INCLUDING ANY NEGLIGENT ACT, OMISSION, OR INTENTIONAL ACT INTENDED TO PROMOTE MY CHILD'S SAFETY OR WELL-BEING. The guardian and student hereby give their permission to the Released Parties to obtain emergency medical treatment for the student if any Released Party deems in its discretion that such emergency medical treatment is necessary. The student and the guardian acknowledge and agree that any photos, videos, pictorial images, voice recordings, or quotations including those of student taken or created by any Released Party (including without limitation any taken by any photographer or videographer paid by or volunteering for any Released Party) during or relating to the Course are the sole property of HMNS and may be used in future publications, web pages, promotions, advertisements and exhibits of HMNS (or any other person authorized to use such images by HMNS) without the need of any additional permission from or consideration to the student or guardian. I release and waive for myself, the student, and anyone claiming through us all claims based on the right of privacy, right of publicity, moral rights, or any other intellectual property rights related to the rights granted by me to HMNS.

Parent/Guardian (Printed Name) \_\_\_\_\_ Date \_\_\_\_\_ Signature \_\_\_\_\_

# HERMANN PARK PARKING AREAS



## PARKING

### HMNS GARAGE PARKING

- We provide free parking passes for parents who park in the HMNS garage. (Lot B)
- Free parking is dependent on availability.
- Please note that the HMNS parking garage fills quickly and is extremely busy during the sign-in and sign-out times.
- We advise you to carpool and/or arrive early if you plan to use the Museum garage.
- Camper pick-up begins at 3:00 with a 25 minute grace period to address parking. Any child not picked up by 3:25 will be escorted to After Camp. Rest assured, we will keep your child safe until you arrive!

### ALTERNATE PARKING

We highly recommend you utilize the alternate parking areas if you plan to arrive at 3 p.m.

Additional Free parking options include:

- Free 3-hour parking lot in the new Garden Center. (Lot C)
- Free 3-hour parking lot directly off the Circle, by the statue of Sam Houston. (Lot A)
- Free-daily parking near the Zoo. (Lots D, E, F, G, and H)

Additional Paid Parking Options (At your own cost):

- Metered parking around the Museum District.
- Museum Medical Tower
- MFAH
- Children's Museum
- Holocaust Museum parking lot
- The MetroRail - The "Museum District" stop is only 3 blocks from HMNS.

The Houston Museum of Natural Science wishes to thank our  
2014-2015 Partners in Education for their support of our  
science education programming:

American Association of Petroleum Geologists

Aramco

Harry J. Bass, Jr. Foundation

BBVA Compass

CenterPoint Energy

Sudha Chittaluru, M.D.

The City of Sugar Land

ConocoPhillips

Fort Bend Junior Service League

Frost Bank

GDF Suez

The George Foundation

Halliburton

HEB Tournament of Champions

KBR

Kinder Morgan Foundation

The Lubrizol Foundation

LyondellBasell

Morgan Stanley

The Newfield Foundation

Next Level Urgent Care

Phillips 66

UBS

Wells Fargo



# Explorations

SUMMER 2015

HOUSTON MUSEUM OF NATURAL SCIENCE  
5555 HERMANN PARK DRIVE  
HOUSTON, TX 77030

