

HOUSTON MUSEUM *of* NATURAL SCIENCE

Team Building & Corporate Programming





Table of Contents

4 Energize Your Knowledge Base

6 Wiess Energy Hall Team Building

Energy ABCs Team Building

Energy Resource Allocation Team Building

Energy Value Chain Team Building

8 Wiess Energy Hall Courses

Petroleum Industry Overview Class

The Transition from Fossil Fuels to Renewable Energy

9 Wiess Energy Hall Corporate Tour

10 Other Team Building Activities

Sleuths & Secrets Mystery Night

Expedition Center

Museum Scavenger Hunt

12 Book Your Program

Teamwork in action, inspiration in every exhibit

Team up on a scavenger hunt, command a mission to space, or untangle a web of clues to solve a mystery. From problem-solving challenges to creative group tasks, your team will be encouraged to leverage their unique skills, think outside the box, and collaborate among themselves.

Looking for something more energy industry focused? Whether you need a crash course on the entire industry, a refresher on what is going on outside of your silo, or a non-hyped update on clean energy, HMNS—the home of the world’s most innovative energy exhibition—is your go-to source for energy intel.

Programs featuring the Wiess Energy Hall

- Energy ABCs Teambuilding – Half Day
- Petroleum Industry Overview Class (Upstream/Downstream) – Half or Full Day
 - Upstream Course session – Half Day
 - Downstream Course session – Half Day
 - Upstream & Downstream – Full Day course
- Transition from Fossil Fuels to Renewable Energy – Half Day
- Wiess Energy Hall Corporate Tour – 2 hours

Other Team Building Activities

- Sleuths & Secrets Mystery Night
- Expedition Center
 - Mission to Mars
 - Mission to the Moon and Mars
- Museum Wide Scavenger Hunt

What’s included?

Programs scheduled during museum hours include*:

- Parking validation for the HMNS parking garage
- Admission to the permanent exhibit halls

Full day programs include complimentary coffee and snacks for your group in the morning.

Tickets for HMNS parking garage and HMNS permanent exhibits are only valid for the day of your scheduled program.

* Unless stated otherwise

Available Add-on’s, additional fees may be required:

- Extended conference room space
- Special exhibition and/or theatre entry
- Mix and Match! Pick 2 half day courses for a full day of programming.
- After-hours events





Wiess Energy Hall Team Building

Energy ABCs Team Building

As competitive as you make it, teams will hunt down 26 items in the Wiess Energy Hall, each starting with a different letter of the alphabet. Everyone is guaranteed to learn something new, intentionally and unintentionally. After a tour of the Wiess Energy Hall, groups will be assigned different focus areas within the exhibition hall to compete in the Energy ABC challenge. The four focus areas may be selected based on the interest of the group and number of participants.

- A.** Geology of Hydrocarbons and the Drill Floor
- B.** Geophysics of Hydrocarbons, Drilling and Development
- C.** Production, Reservoirs, Fracking and Future Energy Challenges
- D.** Downstream and Renewable Energy Sources

Number of Participants	Pricing	Details
Ideal: 16+ participants (4 teams with at least 4 per team)	\$1,250	Up to 10 participants
Minimum: 6 participants (3 teams with 2 per team)	+\$100	For each additional participant
Maximum: 60 participants (12 teams with 5 per team)		

Morning	Afternoon	Schedule
9:00 a.m.	1:00 p.m.	Welcome & Project Introduction
9:15 a.m.	1:15 p.m.	Wiess Energy Hall Tour
10:15 a.m.	2:15 p.m.	Team Investigations
11:30 a.m.	3:30 p.m.	Team Recommendation Presentations, Debrief by Facilitator, Discussion
12:00 p.m.	4:00 p.m.	Free to visit other permanent exhibit halls on your own

Energy Resource Allocation Team Building

What energy resources could an unexplored parcel of land hold? Teams will explore the possibilities of different energy resources using the Wiess Energy Hall, then make a recommendation on how to best utilize the land. Will it be traditional oil and gas, coal, or coal bed methane? Maybe even tight gas or oil sands? How about wind and solar power possibilities? To make it even more interesting, each team will also be given a secondary objective.

Number of Participants	Pricing	Details
Ideal: 16+ participants (4 teams with at least 4 per team)	\$1,250	Up to 10 participants
Minimum: 6 participants (3 teams with 2 per team)	+\$100	For each additional participant
Maximum: 60 participants (12 teams with 5 per team)		

Morning	Afternoon	Schedule
9:00 a.m.	1:00 p.m.	Welcome and Project Introduction
9:15 a.m.	1:15 p.m.	Wiess Energy Hall Tour
10:15 a.m.	2:15 p.m.	Team Investigations
11:30 a.m.	3:30 p.m.	Team Recommendation Presentations, Debrief by Facilitator, Discussion
12:00 p.m.	4:00 p.m.	Free to visit other permanent exhibit halls on your own

Energy Value Chain Team Building

Upstream, oil markets, midstream and downstream. Power, gas, coal and renewables. After time in the Wiess Energy Hall focused on the Energy Value Chain, a potential future scenario will be presented. Small teams will be tasked to assess challenges and advantages for different aspects, as well as how these will affect others in the chain. Then the entire group will review and discuss, link by link.

Number of Participants	Pricing	Details
Ideal: 16+ participants (4 teams with at least 4 per team)	\$1,250	Up to 10 participants
Minimum: 6 participants (3 teams with 2 per team)	+\$100	For each additional participant
Maximum: 60 participants (12 teams with 5 per team)		

Morning	Afternoon	Schedule
9:00 a.m.	1:00 p.m.	Welcome & Project Introduction
9:15 a.m.	1:15 p.m.	Wiess Energy Hall Tour
10:15 a.m.	2:15 p.m.	Team Investigations
11:30 a.m.	3:30 p.m.	Team Recommendation Presentations, Debrief by Facilitator, Discussion
12:00 p.m.	4:00 p.m.	Free to visit other permanent exhibit halls on your own

Wiess Energy Hall Courses

Petroleum Industry Overview Class

What goes up, hopefully comes down! This program is customizable to fit all your Upstream or Downstream needs and can be combined for a full day experience to give your group a comprehensive understanding of the petroleum industry. Two classroom sessions—(a) Upstream and (b) Downstream—are both complemented by time in the Wiess Energy Hall with the instructors, veterans of the industry who make talking shop fun. This class is perfect for those needing a substantial orientation to terminology and processes. Those who would benefit include folks new to the industry, nontechnical staff (accounting, legal, admin) and those seeking to gain a bigger picture of the petroleum value chain outside their niche.

Upstream or Downstream — Half Day Course

Morning	Afternoon	Schedule
9:00 a.m.	1:00 p.m.	Welcome, Energy Icebreaker, Introduction
9:15 a.m.	1:15 p.m.	Classroom Session
11:15 a.m.	3:15 p.m.	Wiess Energy Hall Tour
12:00 p.m.	4:00 p.m.	Free to visit other permanent exhibit halls on your own

Both Upstream and Downstream — Full Day Course

Time	Schedule
9:00 a.m.	Welcome, Energy Icebreaker, Introduction
9:15 a.m.	Classroom Session - Upstream
11:15 a.m.	Wiess Energy Hall Tour - Upstream
12:00 p.m.	Lunch Break
1:00 p.m.	Classroom Session - Downstream
3:00 p.m.	Wiess Energy Hall Tour - Downstream
4:00 p.m.	Free to visit other permanent exhibit halls on your own

Number of Participants	Pricing	Details
Ideal: 10+ participants	Half Day Course: \$1,250	Up to 10 participants
Minimum: 3 participants	+ \$100	For each additional participant
Maximum: 40 participants	Full Day Course: \$2,480	Up to 10 participants
	+ \$200	For each additional participant



The Transition from Fossil Fuels to Renewable Energy

Sustainability! What will it take? It won't be an overnight 100% conversion. It will require dedication and ingenuity, but it is doable and strides have already been made to make an impact. You will leave this class with a grasp of the advantages and challenges of the major alternative energy sources. The goal is for you to leave with an understanding of these sources, as well as the current trends and future expectations of moving from carbon-based energy to renewable energy.

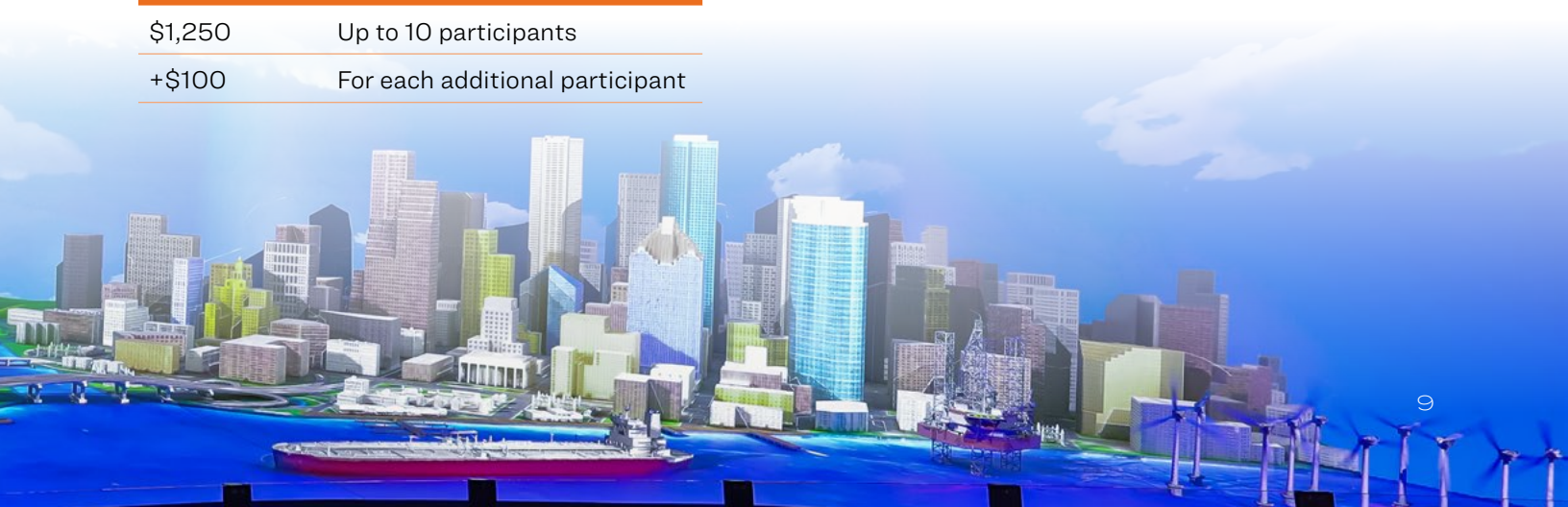
Morning	Afternoon	Schedule
9:00 a.m.	1:00 p.m.	Welcome, Project Introduction
9:15 a.m.	1:15 p.m.	Wiess Energy Hall Tour
10:15 a.m.	2:15 p.m.	Team Investigations
11:30 a.m.	3:30 p.m.	Team Recommendation Presentations, Debrief by Facilitator, Discussion
12:00 p.m.	4:00 p.m.	Free to visit other permanent exhibit halls on your own

Number of Participants	Pricing	Details
Ideal: 20 participants	\$1,250	Up to 10 participants
Minimum: 6 participants	+\$100	For each additional participant
Maximum: 80 participants		

Wiess Energy Hall Corporate Tour

Tour the entire Energy Hall or focus on a specific process area. Corporate tours can be customized to your group's interests. Designated guides with years of experience in your chosen focus area will lead your group. This activity takes approximately 2 hours and can accommodate most group sizes. Payment is required to book your tour. Tours are held during operating hours; after-hours tours will be categorized as rentals.

Time	Schedule	Number of Participants
About 2 hours	Wiess Energy Hall Tour	Ideal: 20 participants
After the tour	Free to visit other permanent exhibit halls on your own	Minimum: 6 participants
		Maximum: 80 participants
Pricing	Details	
\$1,250	Up to 10 participants	
+\$100	For each additional participant	





Other Team Building Activities

Sleuths & Secrets Mystery Night

Are you good at solving mysteries? Can you untangle a web of clues, evidence, history and mystery? If you're looking for an out-of-the-ordinary mystery-solving adventure then Sleuths & Secrets is for you!

It all starts when you unlock a series of clues, riddles and objects found in a Cabinet of Curiosities belonging to Ferrante Imperato, a 16th Century resident of Naples, Italy. While many believe he was merely an apothecary who liked to display his collections of unusual specimens, others speculate that in reality he was a dedicated alchemist.

Did he solve the mysteries of transformation? Did he, in fact, turn a lowly base metal into pure gold? Did he discover the secret of immortality? Will his specimens lead you to a hidden treasure?

This interactive evening of exploration, discovery and secrets will begin after the museum closes and last approximately 1.5 hours.

Full payment is required to confirm your booking.

Museum Scavenger Hunt

Gear up and get ready to search and scour the exhibits in a museum wide scavenger hunt! Teams will get clues via their smartphone device that lead them around the halls to specific artifacts and locations. Put your wits to the test with this exciting, team event.

Add-on with a separate half day program \$350 for a group up to 50 participants.

Number of Participants

Accommodates up to 14 people

Pricing Details

\$550 Per group booking (Mon-Fri)

- You and your team will have one hour to solve the mystery, with time for an orientation and debriefing.
- Ideal for groups of 10-14 people.
- It's great for corporate team building. Everyone will need to work together to solve this mystery.
- Great activity to add on after standard programming.
- Available only at the HMNS Hermann Park location.

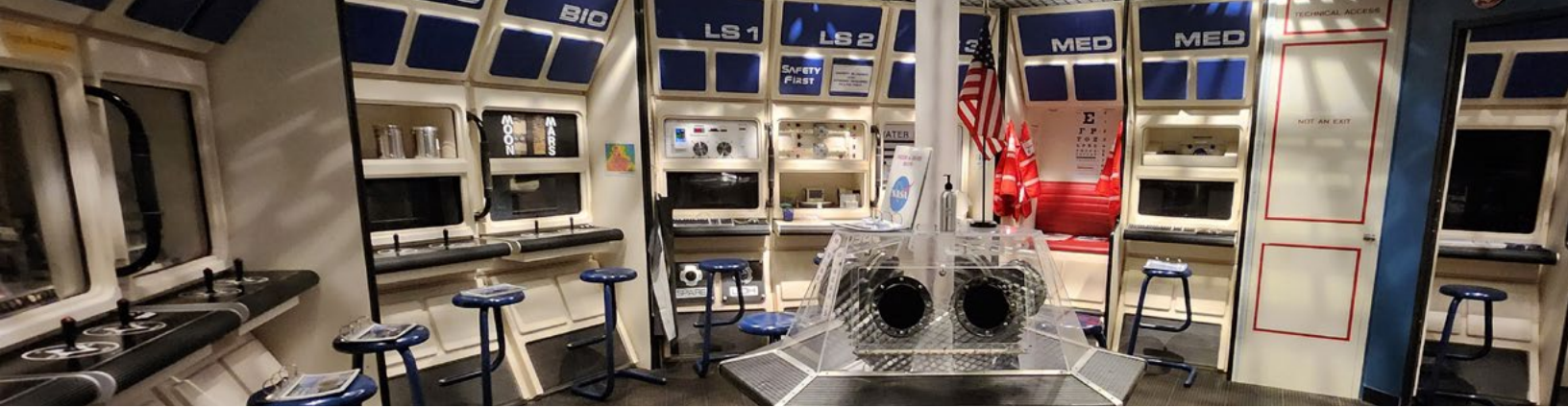
Number of Participants

Accommodates 3-100 people

Pricing Details

\$750 Up to 10 participants

\$60 For each additional participant



Expedition Center

In the year 2076, the United States is ready to take the next big leap in space exploration. After successfully operating a base on the Moon, called New Tranquility Base, the time has come to send a group of scientists to the planet Mars. The expedition has been named Operation: LEAPFROG – Lunar Exchange And Preparation For Research On-Going, and has two phases. During Phase One, the New Tranquility Base lunar colonists must act as Mission Control to bring their replacements from Earth orbit to the Moon for a crew exchange.

After landing, Phase Two begins with new mission controllers and new astronauts ready to begin the journey to Mars. The expedition is completed with a successful landing on Chryse Planitia, the Golden Plains of Mars. Along the way, astronauts must complete experiments and make certain the ship is functioning properly. Mission controllers must track information, do research, and ensure the safety of the crew. The success of the expedition relies on responsibility, teamwork, communications, and good decision-making.

Mission to the Moon

Number of Participants

Accommodates up to 22 people

Pricing Details

\$450 12 to 22 participants

*Exhibit admission & garage parking are **NOT** included in the program pricing.*



Mission to the Moon and Mars

Number of Participants

Accommodates up to 44 people

Pricing Details

\$750 23 to 44 participants

*Exhibit admission & garage parking are **NOT** included in the program pricing.*



Book Your Program!

Fill out the linked form and we will contact you about booking your program!

Available add-ons, additional fees may be required:

- Extended conference room space
- Special exhibition and/or theatre entry
- Mix and match! Pick 2 half day courses for a full day of programming
- After-hours events
- Coffee and Snacks (for classroom sessions only)

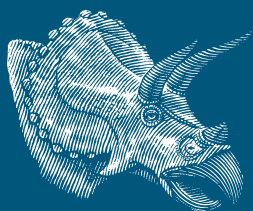
Pricing & Payments

Payment for the minimum number of participants is due to reserve your group's date. You will receive an invoice with payment options upon booking which may be paid via credit card, check or wire transfer. Your reservation may not be held if payment is not received within four weeks invoicing, or two weeks prior to the class if the class is booked less than one month in advance. Payment for additional participants and extended conference room space is due 48 hours in advance.

Pricing listed is for programming scheduled during museum hours. Additional fees may apply for programs scheduled after-hours.

Cancellations

Payment for your scheduled program is due 2 weeks before your scheduled class date. No refunds will be made after the final payment is made.



HOUSTON MUSEUM
of NATURAL SCIENCE

