



HOUSTON MUSEUM
of NATURAL SCIENCE

SHARKS! THE MEG, THE MONSTERS & THE MYTHS

Field Trip Packages

Available only through
March 16!

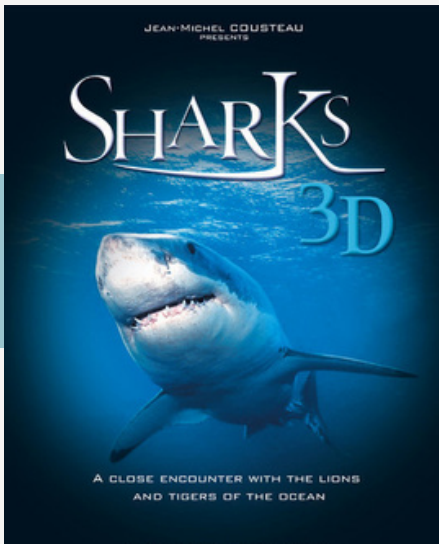
CONTACT US

hmns.org/book
hmns.org/fieldtrips
reservations@hmns.org

The Meg

- Entry to *Sharks! The Meg, The Monsters & The Myths*
- Guided Tour of the Hall of Paleontology including insights into the Jurassic Oceans, The Cretaceous Sea and The Miocene Sea
- Film: *Sharks 3D* in the Wortham Giant Screen Theatre
- Show: *Expedition Reef* in the Burke Baker Planetarium
- Entry to the Permanent Exhibit Halls

Cost: *\$21.00 per person



The Whale Shark

- Entry to *Sharks! The Meg, The Monsters & The Myths*
- Film: *Sharks 3D* in the Wortham Giant Screen Theatre
- Show: *Expedition Reef* in the Burke Baker Planetarium
- Entry to the Permanent Exhibit Halls

Cost: *\$19.50 per person

Let us help you plan your Field Trip!

These exciting options take the work out of planning a field trip to HMNS! Simply choose your package and let us do the rest.

Incorporate TEKS-aligned curriculum for our exhibit halls into your visit. Visit online at hmns.org/curriculum for more information.

Ask about pairing a Lab or Outreach Program with your package. For an additional fee, your students can enjoy a fun yet educational HMNS program.

For a full list of packages, please visit hmns.org/ftpackages.



The White Shark

- Entry to *Sharks! The Meg, The Monsters & The Myths*
- Guided Tour of the Hall of Malacology
- Show: *Expedition Reef* in the Burke Baker Planetarium
- Entry to the Permanent Exhibit Halls

Cost: *\$15.00 per person

The Hammerhead Shark

- Entry to *Sharks! The Meg, The Monsters & The Myths*
- Entry to the Permanent Exhibit Halls

Cost:*\$10.00 per person



Onsite Additions

- Lab on Demand: Layers of the Ocean | \$250
- Lab on Demand: Just Keep Swimming | \$250
- Lab on Demand: Shark Dissection | \$250
- Outreach Program: Docents to Go Ocean Life | \$150

****NOTE:** Labs and Outreach prices include 25 students. Additions do **not** include entry to *Sharks! The Meg, The Monsters & The Myths* exhibition.

Important Information for Packages

*Packages are available on a first-come, first-served basis. Schedule your field trip early to ensure your reservation.

*All prices are subject to change and may vary depending on the number of students attending and availability.

hmns.org/fieldtrips

This exhibition is supported by Novum Energy and The J.W. Couch Foundation.